



150 Goodman Road ELIZABETH SOUTH SA

3 1 1

For an in-depth look at this home, please click on the 3D tour for a virtual walk-through or copy and paste this link into your browser

Virtual Tour Link: <https://bit.ly/45t9nyN>

To submit an offer, please copy and paste this link into your browser:

<https://www.edgerealty.com.au/buying/make-an-offer/>

Mike Lao, Brendon Ly and Edge Realty RLA256385 are proud to present to the market this easy-care solid brick semi-detached home in the heart of Elizabeth South. Situated on a generous 647sqm approx block, this three-bedroom, one-bathroom abode is the ideal starter home or will perfectly complement any investment portfolio. The prized location ensures you'll never be short on tenants eager to call this property home. The property is

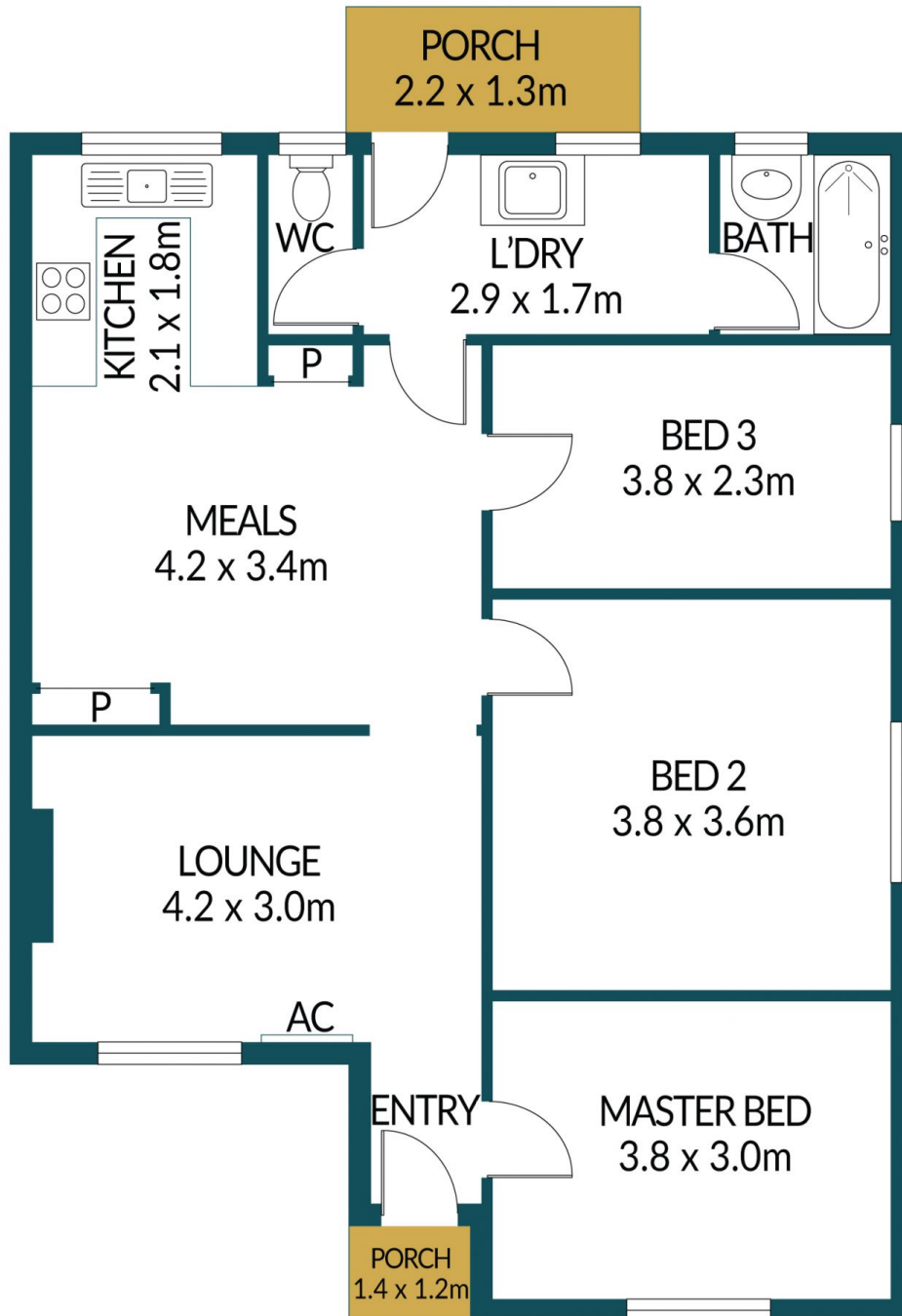
Price : \$ 460,000
Building Size : 81 sqm
Land Size : 647 sqm
View : <https://www.edgerealty.com.au/sale/sa/north-north-east-suburbs/elizabeth-south/residential/house/8034355>



Mike Lao
0410390250



Brendon Ly
0447888444



150 GOODMAN ROAD, ELIZABETH SOUTH

Disclaimer

Plans shown are for marketing purposes only. All dimensions are approximate and not to scale. They are subject to errors and inaccuracies and no liability will be accepted. Interested parties should make their own enquiries. Inclusions and exclusions must be confirmed in the Residential Contract.

APPROXIMATE DIMENSIONS

LIVING:	81.5m ²
PORCH:	4.6m ²
TOTAL:	86.1m ²