



22 Knighton Road ELIZABETH NORTH SA

3 1 3

For an in-depth look at this home, please click on the 3D tour for a virtual walk-through or copy and paste this link into your browser

Virtual Tour Link:
<https://my.matterport.com/show/?m=XuvoiomnEQk>

To submit an offer, please copy and paste this link into your browser:
<https://www.edgerealty.com.au/buying/make-an-offer/>

Mike Lao, Brendon Ly and Edge Realty RLA256385 are proud to present to the market this fantastic opportunity ideal for first home buyers, families, or savvy investors. This move-in ready maisonette set on a 616sqm block offers a fantastic blend of style, functionality, and potential. The neutral colour scheme provides a blank canvas for you to add your personal touch, making it easy to create your

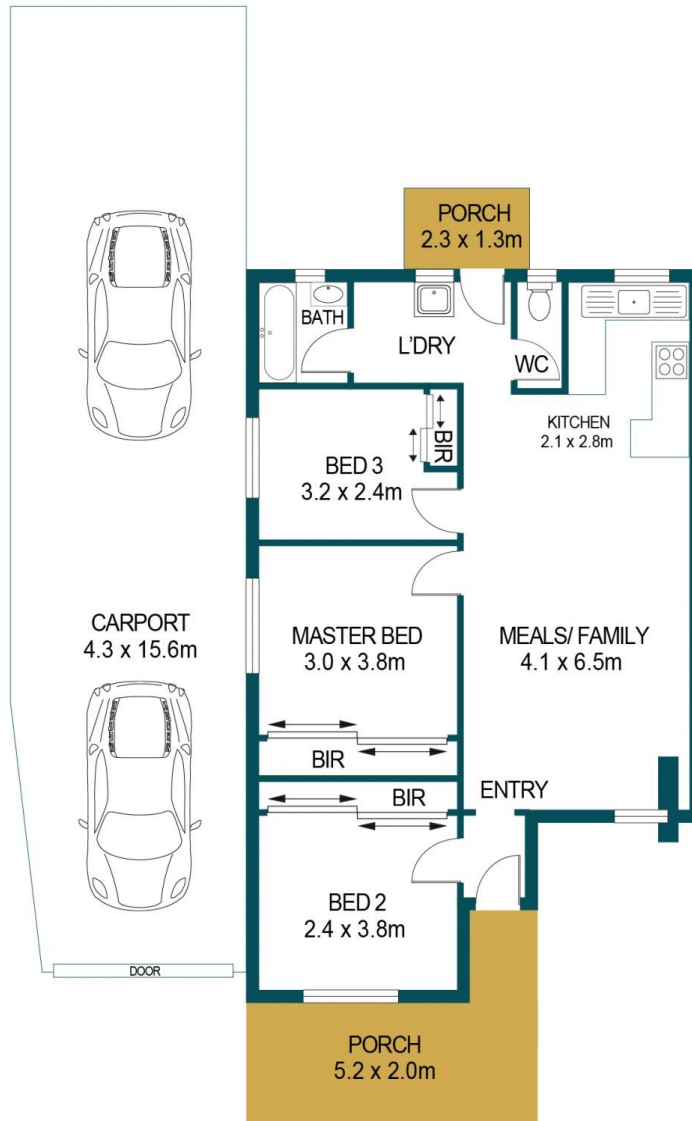
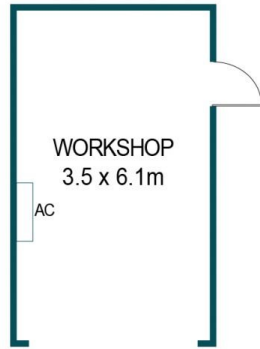
Price : \$419,000 - \$459,000
Building Size : 74 sqm
Land Size : 616 sqm
View : <https://www.edgerealty.com.au/sale/sa/north-north-east-suburbs/elizabeth-north/residential/house/8040645>



Mike Lao
0410390250



Brendon Ly
0447888444



PROPOSED RESIDENCE	
LIVING:	74.0m ²
PORCH:	10.4m ²
CARPORT:	67.1m ²
WORKSHOP:	21.4m ²
TOTAL:	177.5m ²

22 KNIGHTON ROAD, ELIZABETH NORTH

DISCLAIMER

PLANS SHOWN ARE FOR MARKETING PURPOSES ONLY, ALL DIMENSIONS ARE APPROXIMATE AND NOT TO SCALE. THEY ARE SUBJECT TO ERRORS AND INACCURACIES AND NO LIABILITY WILL BE ACCEPTED. INTERESTED PARTIES SHOULD MAKE THEIR OWN ENQUIRIES.



IMAGES AND FLOORPLAN BY:
IN - HOUSE
IMAGING
inhouseimaging .com.au