



## 5 Aberdeen Lane ANDREWS FARM SA

3 2 1

\*For an in-depth look at this home, please click on the 3D tour for a virtual walk-through or copy and paste this link into your browser\*

Virtual <https://my.matterport.com/show/?m=xMRMTY29yCb> Tour Link:

To submit an offer, please copy and paste this link into your browser:  
<https://www.edgerealty.com.au/buying/make-an-offer/>

Mike Lao, Tyson Bennett and Edge Realty RLA256385 are proud to present to the market this stunning modern 3 bedroom, 2 bathroom home in Andrews Farm. The property is situated on a low-maintenance 300sqm rectangular block, boasting ducted air-conditioning throughout, ensuring year-round comfort, and features multiple living spaces to suit your family's needs.

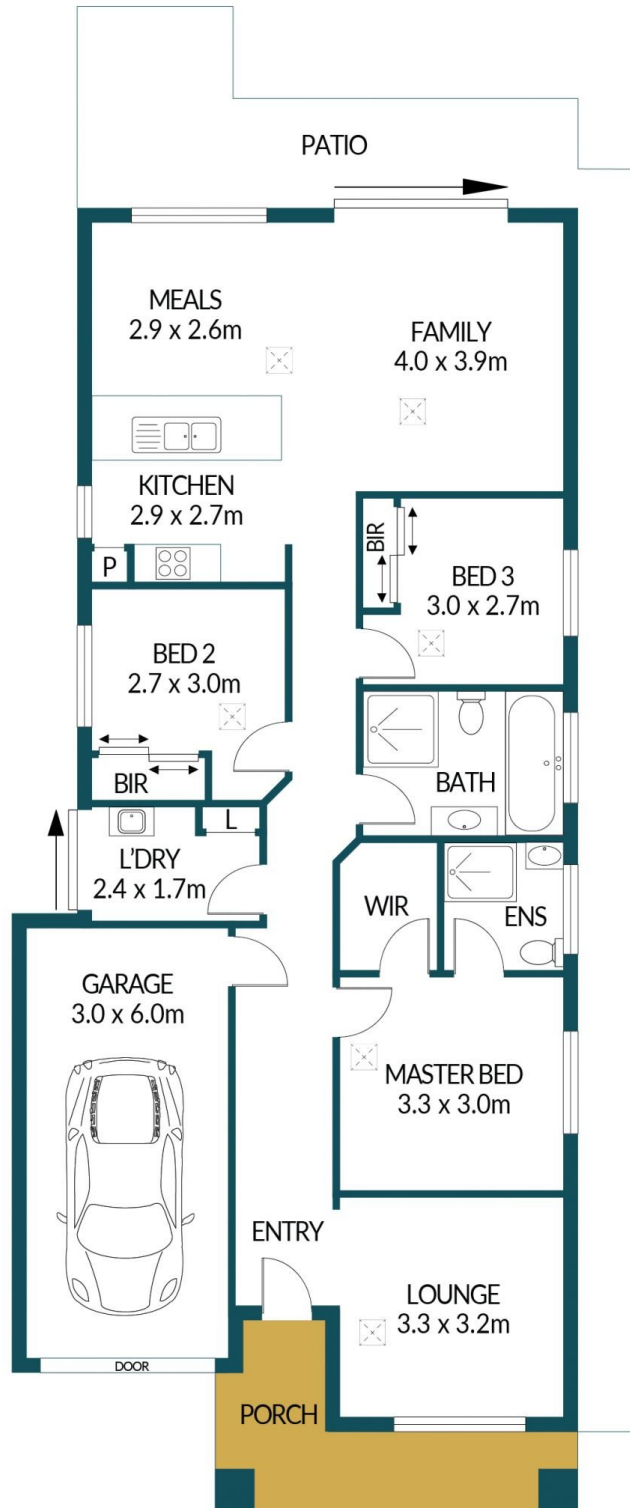
**Price** : \$499,000 - \$548,000  
**Building Size** : 105 sqm  
**Land Size** : 300 sqm  
**View** : <https://www.edgerealty.com.au/sale/sa/north-north-east-suburbs/andrews-farm/residential/house/8051621>



**Mike Lao**  
0410390250



**Tyson Bennett**  
0437161997



## 5 ABERDEEN LANE, ANDREWS FARM

### Disclaimer

Plans shown are for marketing purposes only. All dimensions are approximate and not to scale. They are subject to errors and inaccuracies and no liability will be accepted. Interested parties should make their own enquiries. Inclusions and exclusions must be confirmed in the Residential Contract.

### APPROXIMATE DIMENSIONS

LIVING:	105.4m <sup>2</sup>
GARAGE:	18.0m <sup>2</sup>
PORCH:	8.3m <sup>2</sup>
TOTAL:	131.7m <sup>2</sup>