



96 Clayson Road SALISBURY EAST SA

4 1 5

For an in-depth look at this home, please click on the 3D tour for a virtual walk-through or copy and paste this link into your browser

Virtual Tour Link:
<https://my.matterport.com/show/?m=gHKnJocXqVT>

Auction Saturday the 20th of July 2024 onsite at 4:10pm
 (Unless Sold Prior)

To submit an offer, please copy and paste this link into your browser:
<https://www.edgerealty.com.au/buying/make-an-offer/>

Mike Lao, Brendon Ly and Edge Realty RLA256385 are proud to present to the market a charming 4-bedroom, 1-bathroom solid brick home in the heart of Salisbury East. While located on a big road, the property enjoys surprising

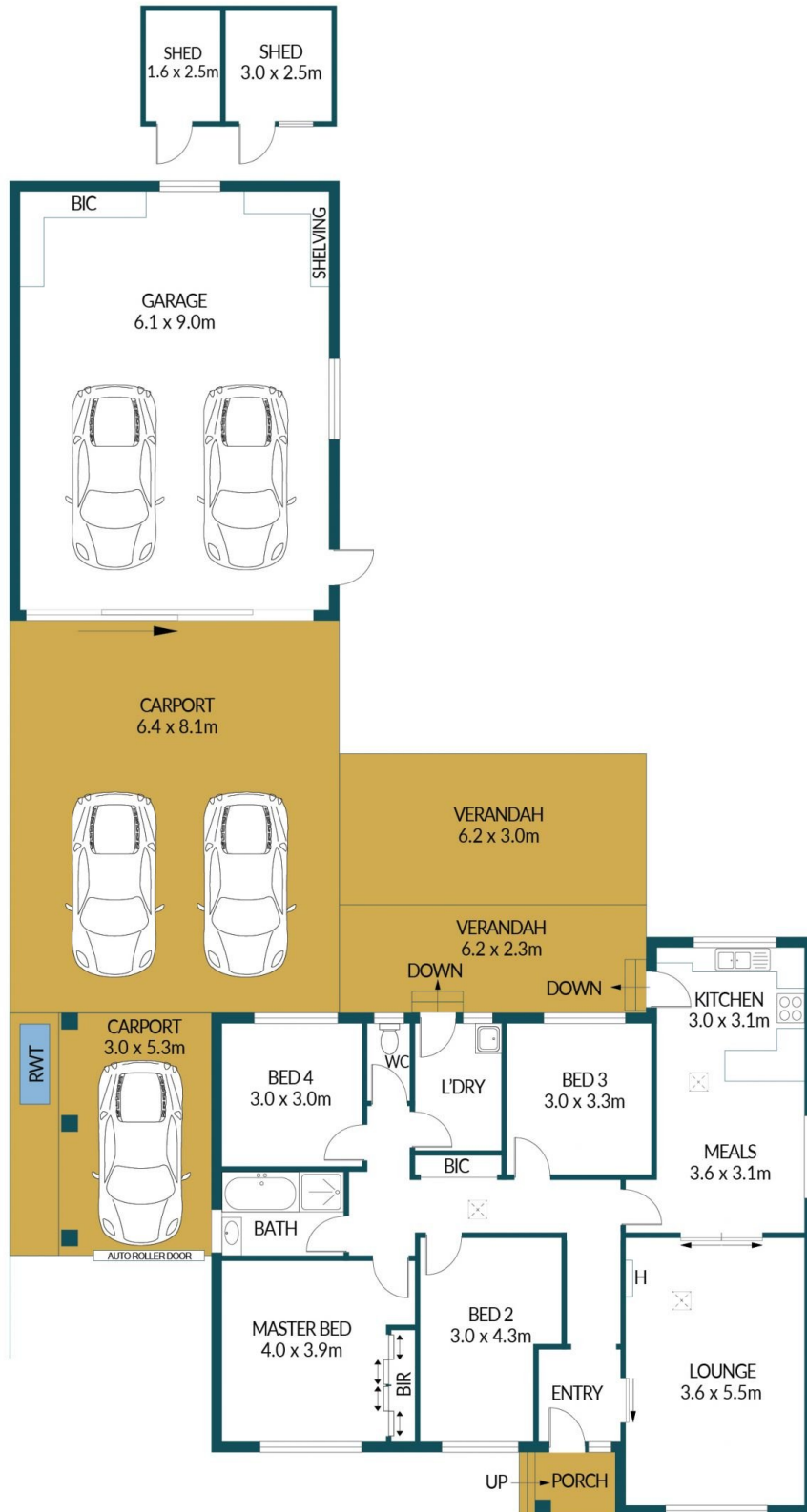
Price : Auction Sat 20/7/24 at 4:10PM on site (USP)
Building Size : 112 sqm
Land Size : 720 sqm
View : <https://www.edgerealty.com.au/sale/sa/north-north-east-suburbs/salisbury-east/residential/house/8051984>



Mike Lao
 0410300250



Brendon Ly
 0417888444



96 CLAYSON ROAD, SALISBURY EAST

Disclaimer

Plans shown are for marketing purposes only. All dimensions are approximate and not to scale. They are subject to errors and inaccuracies and no liability will be accepted. Interested parties should make their own enquiries. Inclusions and exclusions must be confirmed in the Residential Contract.

APPROXIMATE DIMENSIONS

LIVING:	112.0m ²
GARAGE/SHED:	66.4m ²
PORCH/CARPORT:	68.7m ²
VERANDAH/PERGOLA:	32.9m ²
TOTAL:	280.0m ²