



8 Seatown Road ELIZABETH PARK SA

3 1 1

For an in-depth look at this home, please click on the 3D tour for a virtual walk-through or copy and paste this link into your browser

Virtual Tour Link: <https://shorturl.at/Orbtc>

To submit an offer, please copy and paste this link into your browser:

<https://www.edgerealty.com.au/buying/make-an-offer/>

Mike Lao, Tyson Bennett and Edge Realty RLA256385 are proud to present to the market this charming home perfect for families, first-home buyers, and astute investors seeking a fantastic property with exceptional value. Nestled on a generous 670sqm block (approx) with a captivating 23.7m frontage (approx), this humble abode offers a fantastic

[For full version visit the website](#)

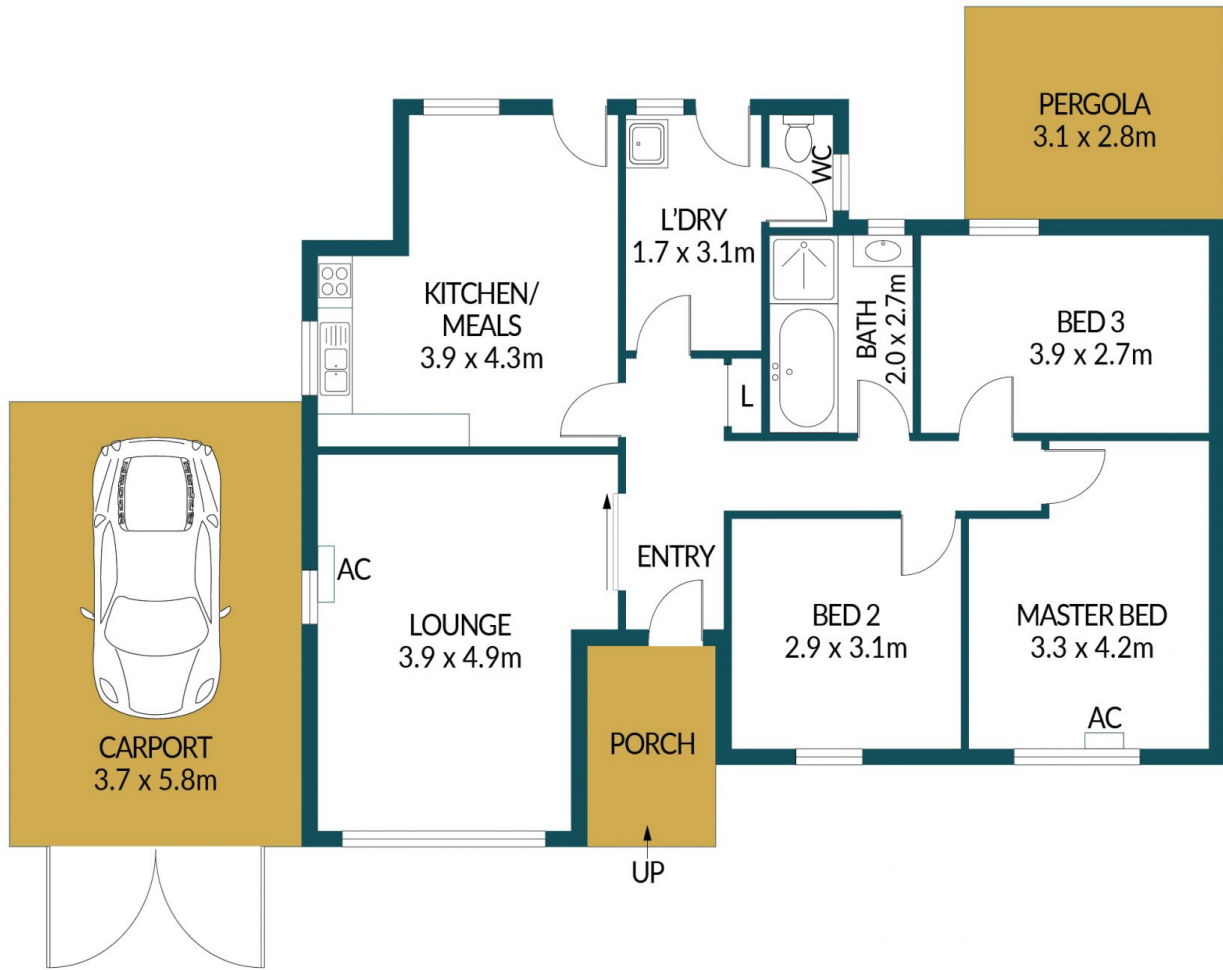
Type : House
Price : \$ 531,000
Building Size : 93 sqm
Land Size : 670 sqm
View : <https://www.edgerealty.com.au/sale/sa/north-north-east-suburbs/elizabeth-park/residential/house/8084738>



Mike Lao
0419309359



Tyson Bennett
0427461997



8 SEATOWN ROAD, ELIZABETH PARK

Disclaimer

Plans shown are for marketing purposes only. All dimensions and placements are approximate and not to scale. They are subject to errors and inaccuracies and no liability will be accepted. Interested parties should make their own enquiries. Inclusions and exclusions must be confirmed in the Residential Contract.

APPROXIMATE DIMENSIONS

| | |
|----------|---------------------|
| LIVING: | 93.1m ² |
| PERGOLA: | 8.6m ² |
| CARPOR: | 21.4m ² |
| PORCH: | 4.4m ² |
| TOTAL: | 127.5m ² |