



23 Judd Road ELIZABETH SA

3 1 3

For an in-depth look at this home, please click on the 3D tour for a virtual walk-through or copy and paste this link into your browser

Virtual [Tour](https://my.matterport.com/show/?m=rVkvBDqvHMH) Link:

To submit an offer, please copy and paste this link into your browser:
<https://www.edgerealty.com.au/buying/make-an-offer/>

Mike Lao, Tyson Bennett and Edge Realty RLA256385 are proud to present to the market this spacious family home sitting on a generous 750sqm approx allotment, offering endless possibilities for families and savvy investors. Feel secure with front roller shutters and security doors. Keep water bills low and stay environmentally conscious with a 5000L rainwater tank and 21 solar panels with a Huawei

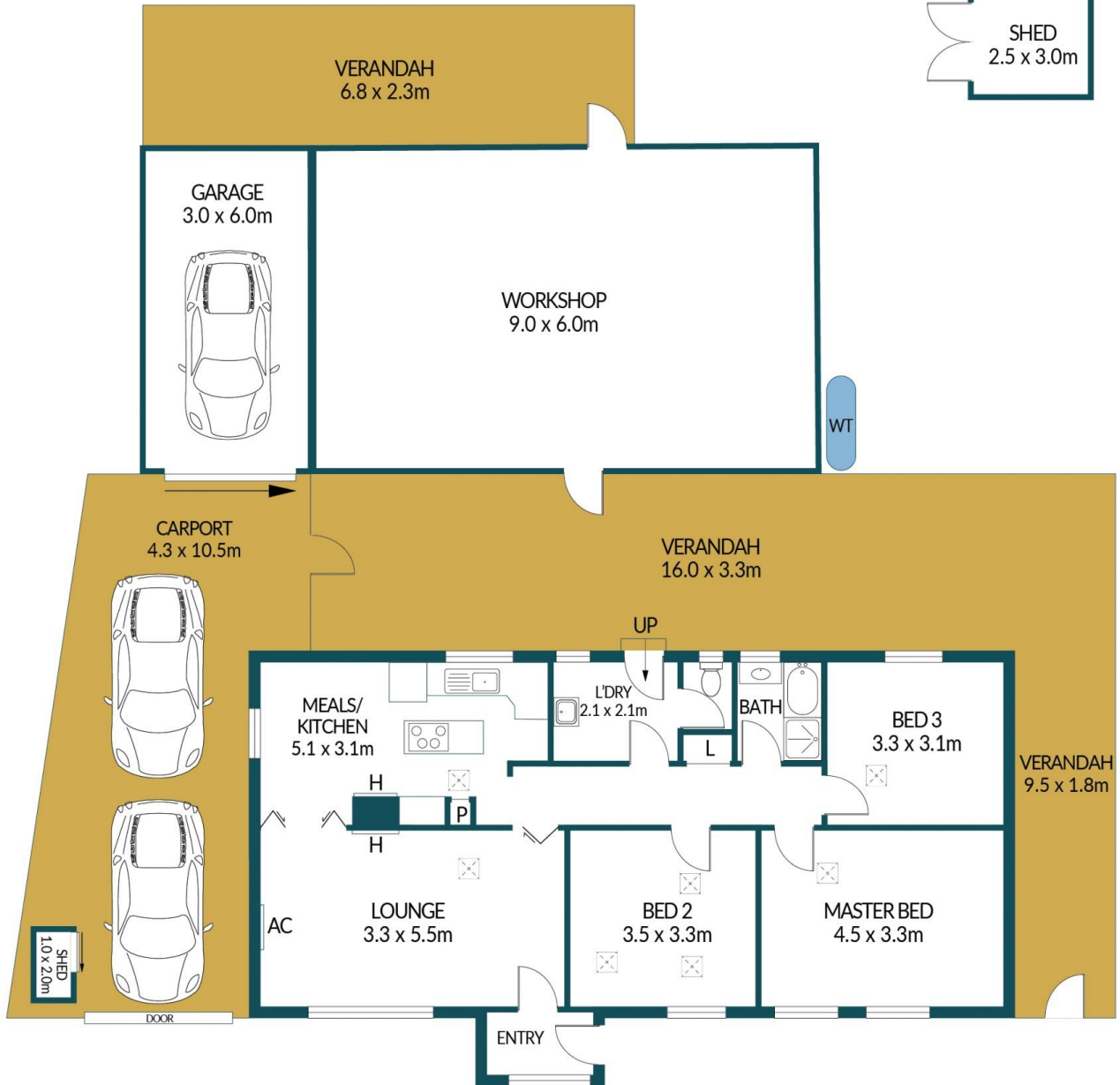
Price : \$ 540,000
Building Size : 91 sqm
Land Size : 750 sqm
View : <https://www.edgerealty.com.au/sale/sa/north-north-east-suburbs/elizabeth/residential/house/8095788>



Mike Lao
0410390250



Tyson Bennett
0437161997



23 JUDD ROAD, ELIZABETH

Disclaimer

Plans shown are for marketing purposes only. All dimensions and placements are approximate and not to scale. They are subject to errors and inaccuracies and no liability will be accepted. Interested parties should make their own enquiries. Inclusions and exclusions must be confirmed in the Residential Contract.

APPROXIMATE DIMENSIONS

LIVING:	91.3m ²
GARAGE/WORKSHOP:	72.0m ²
CARPORT:	45.2m ²
VERANDAH:	69.9m ²
STORAGE:	15.6m ²
SHED:	13.5m ²
TOTAL:	307.5m ²