



## 36A Bristol Crescent DAVOREN PARK SA

3 2 1

\*For an in-depth look at this home, please click on the 3D tour for a virtual walk-through or copy and paste this link into your browser\*

Virtual Tour Link: <https://shorturl.at/GDamQ>

To submit an offer, please copy and paste this link into your browser:

<https://www.edgerealty.com.au/buying/make-an-offer/>

Mike Lao, Brendon Ly and Edge Realty RLA256385 are proud to present to the market this delightful, modern home perfect for families and investors alike. A neutral colour scheme and large windows throughout create a fresh and inviting finish to the home. Peace of mind is assured with the secure single garage conveniently located under the main roof with internal access and a manual roller door. A plumbed rainwater tank with an electric pump keeps water

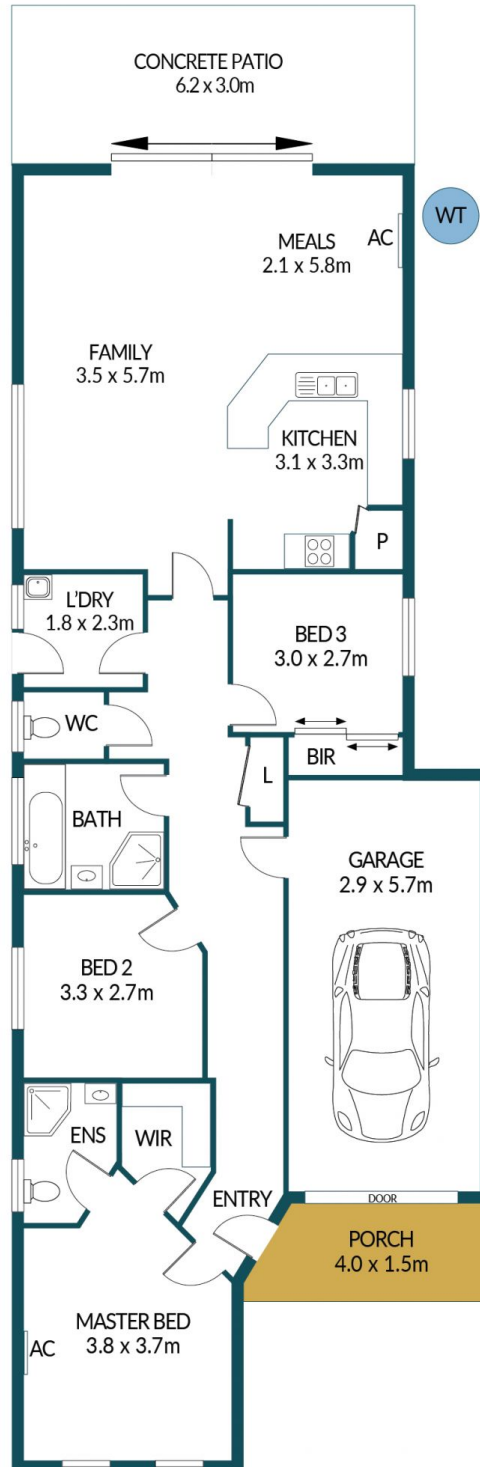
**Price** : \$469,000 - \$509,000  
**Building Size** : 123 sqm  
**Land Size** : 319 sqm  
**View** : <https://www.edgerealty.com.au/sale/sa/north-north-east-suburbs/davoren-park/residential/house/8102885>



**Mike Lao**  
0410390250



**Brendon Ly**  
0447888444



## 36A BRISTOL CRESCENT, DAVOREN PARK

### Disclaimer

Plans shown are for marketing purposes only. All dimensions and placements are approximate and not to scale. They are subject to errors and inaccuracies and no liability will be accepted. Interested parties should make their own enquiries. Inclusions and exclusions must be confirmed in the Residential Contract.

### APPROXIMATE DIMENSIONS

LIVING:	123.9m <sup>2</sup>
GARAGE:	18.0m <sup>2</sup>
PATIO	18.6m <sup>2</sup>
PORCH:	6.0m <sup>2</sup>
TOTAL:	166.5m <sup>2</sup>