



50 St Germain Avenue ANDREWS FARM SA

3 2 1

For an in-depth look at this home, please click on the 3D tour for a virtual walk-through or copy and paste this link into your browser

Virtual Tour Link: <https://shorturl.at/5RuIB>

To submit an offer, please copy and paste this link into your browser:

<https://www.edgerealty.com.au/buying/make-an-offer/>

Mike Lao, Tyson Bennett and Edge Realty RLA256385 are proud to present to the market this sleek and stylish modern 3-bedroom modern home in the heart of Andrews Farm. This modern residence offers an unparalleled living experience, seamlessly blending style, comfort, and functionality - perfect for young families, first home buyers and downsizers.

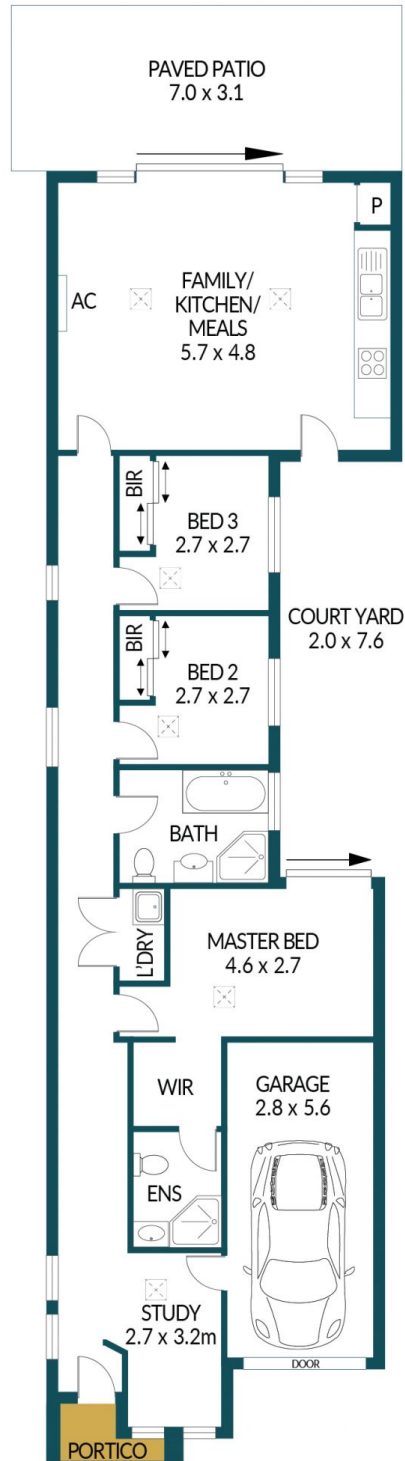
Price : \$449,000 - \$489,000
Building Size : 90 sqm
Land Size : 210 sqm
View : <https://www.edgerealty.com.au/sale/sa/north-north-east-suburbs/andrews-farm/residential/house/8103394>



Mike Lao
0410390250



Tyson Bennett
0437161997



50 ST GERMAIN AVENUE, ANDREWS FARM

Disclaimer

Plans shown are for marketing purposes only. All dimensions and placements are approximate and not to scale. They are subject to errors and inaccuracies and no liability will be accepted. Interested parties should make their own enquiries. Inclusions and exclusions must be confirmed in the Residential Contract.

APPROXIMATE DIMENSIONS

LIVING:	90.5m ²
GARAGE:	15.7m ²
PORTICO:	1.5m ²
PATIO:	21.7m ²
TOTAL:	129.4m ²