



5 Amber Street SALISBURY EAST SA

3 2 2

For an in-depth look at this home, please click on the 3D tour for a virtual walk-through or copy and paste this link into your browser

Virtual Tour Link:
<https://my.matterport.com/show/?m=vBrTPWb9RRh>

To submit an offer, please copy and paste this link into your browser:
<https://www.edgerealty.com.au/buying/make-an-offer/>

Mike Lao, Brendon Ly and Edge Realty RLA256385 are proud to present to the market this superb double brick beauty with multiple living areas, sure to pull on the heart strings and be the perfect place to call home. Standing proud on an 800sqm approx block in the heart of Salisbury East, discover your dream home in this beautifully maintained family residence!

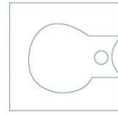
Price : \$749,000 - \$819,000
Building Size : 161 sqm
Land Size : 800 sqm
View : <https://www.edgerealty.com.au/sale/sa/north-north-east-suburbs/salisbury-east/residential/house/8108855>



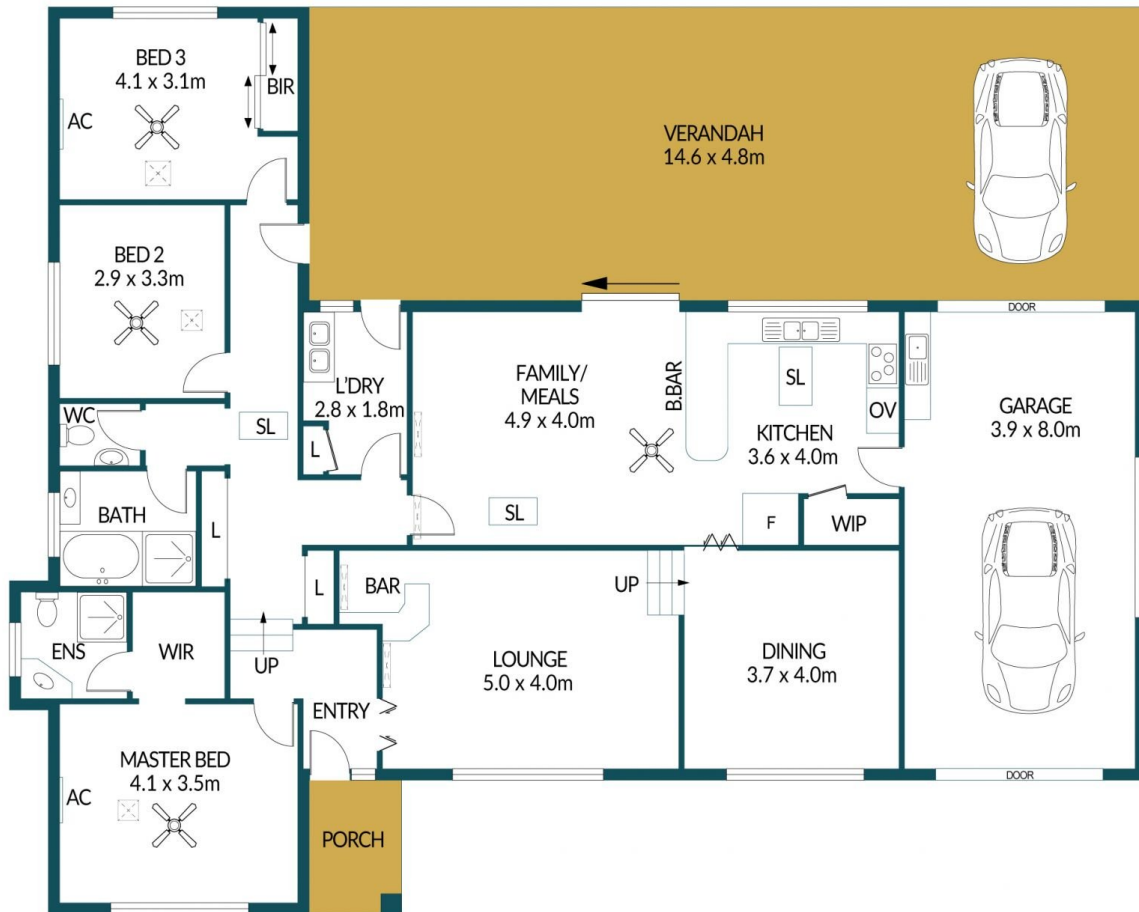
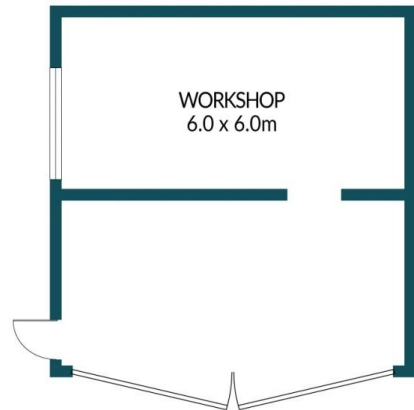
Mike Lao
0410390250



Brendon Ly
0447888444



WOOD
OVEN



5 AMBER STREET, SALISBURY EAST

Disclaimer

Plans shown are for marketing purposes only. All dimensions and placements are approximate and not to scale. They are subject to errors and inaccuracies and no liability will be accepted. Interested parties should make their own enquiries. Inclusions and exclusions must be confirmed in the Residential Contract.

APPROXIMATE DIMENSIONS

LIVING:	161.0m ²
GARAGE:	67.2m ²
PORCH/VERANDAH:	74.4m ²
PERGOLA:	19.8m ²
TOTAL:	322.4m ²