



111 Whites Road SALISBURY NORTH SA

3 1 4

For an in-depth look at this home, please click on the 3D tour for a virtual walk-through or copy and paste this link into your browser

Virtual Tour Link:
<https://my.matterport.com/show/?m=N814LbE6kth>

To submit an offer, please copy and paste this link into your browser:
<https://www.edgerealty.com.au/buying/make-an-offer/>

Tyson Bennett, Mike Lao and Edge Realty RLA256385 are proud to present to the market this opportunity to secure a comfortable solid-brick family home in the heart of Salisbury North. Situated on a large 836sqm (approx) easement-free block, this property is sure to catch the eye

[For full version visit the website](https://www.edgerealty.com.au)

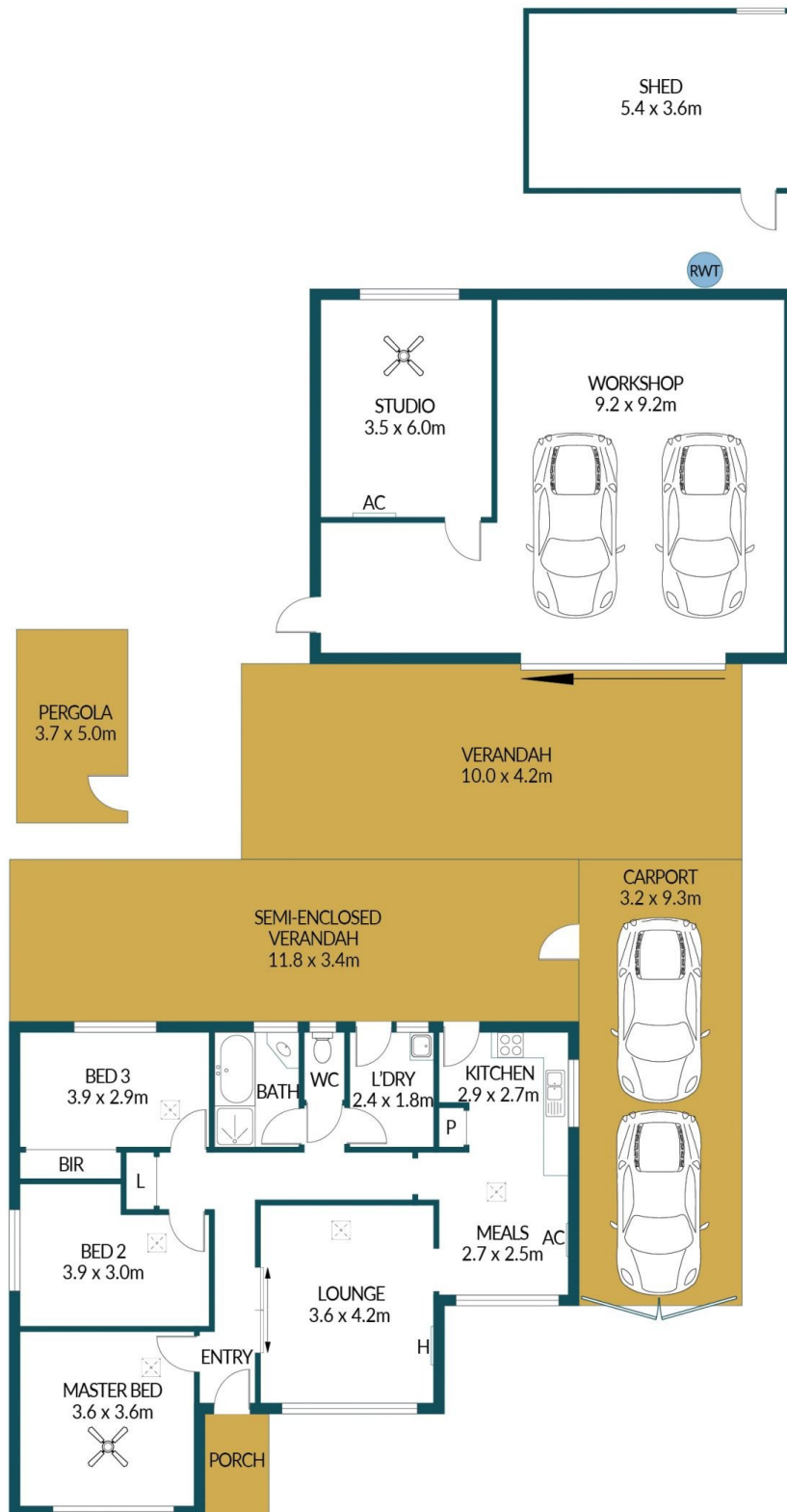
Type : House
Price : \$ 625,000
Building Size : 84 sqm
Land Size : 836.21 sqm
View : <https://www.edgerealty.com.au/sale/sa/north-north-east-suburbs/salisbury-north/residential/house/8116225>



Tyson Bennett
 0127161007



Mike Lao
 0110200250



111 WHITES ROAD, SALISBURY NORTH

Disclaimer

Plans shown are for marketing purposes only. All dimensions and placements are approximate and not to scale. They are subject to errors and inaccuracies and no liability will be accepted. Interested parties should make their own enquiries. Inclusions and exclusions must be confirmed in the Residential Contract.

APPROXIMATE DIMENSIONS

LIVING:	84.0m ²
WORKSHOP/SHED:	104.0m ²
PORCH/PERGOLA:	20.6m ²
VERANDAH/CARPORT:	111.9m ²
TOTAL:	320.5m ²