



113 Salisbury Highway SALISBURY SA

To submit an offer, please copy and paste this link into your browser:
<https://www.edgerealty.com.au/buying/make-an-offer/>

Mike Lao, Brendon Ly and Edge Realty RLA256385 are proud to present to the market the opportunity to secure one or two double-storey house and land packages designed and built by 3GEN Building Consultants, who will supply you with full architectural drawings, council and other relevant approvals, engineering plans and all required building specifications.

Set at the back of the block for added privacy, these beautifully crafted designs have a long list of must-have features offering modern, low-maintenance, family-friendly

[For full version visit the website](#)

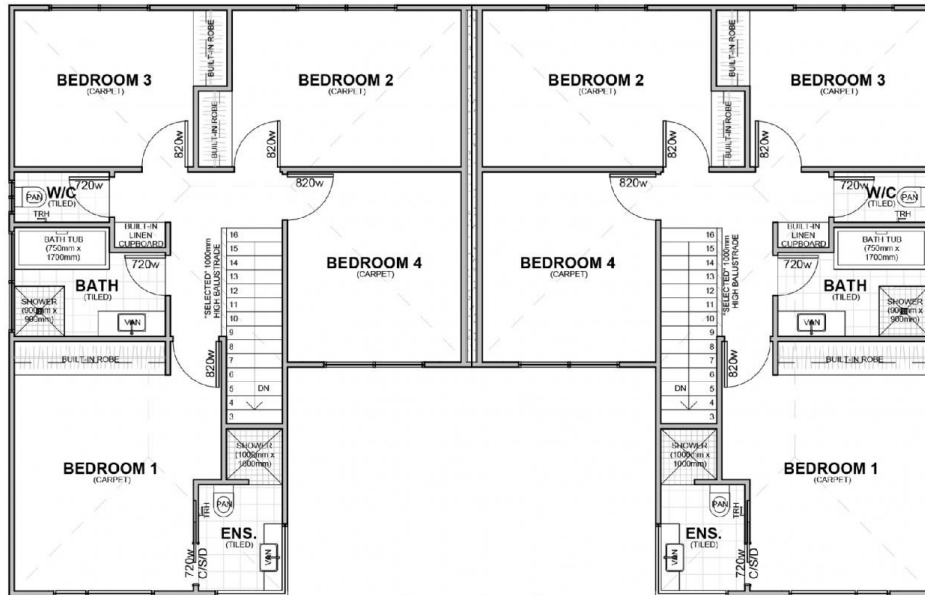
Type : Land
Price : \$869,000 - \$919,000
Land Size : 186.7 sqm
View : <https://www.edgerealty.com.au/sale/sa/north-north-east-suburbs/salisbury/residential/land/8123412>



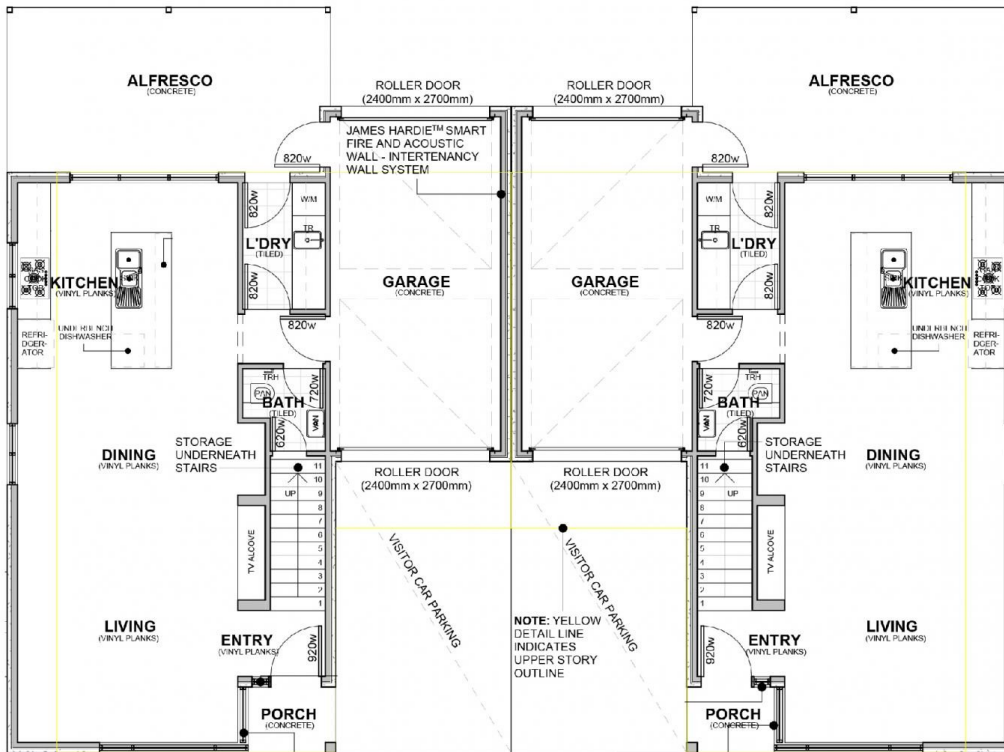
Mike Lao
 0410390250



Brendon Ly
 0447888444



Upper Level



Ground Level

PROPOSED DWELLINGS 113a & 113b Salisbury Highway, Salisbury

Disclaimer

Plans shown are for marketing purposes only. All dimensions and placements are approximate and not to scale. They are subject to errors and inaccuracies and Edge Realty will not accept any liability. Interested parties should make their own enquiries. Inclusions and exclusions must be confirmed in the Edge Realty Residential Contract.

APPROXIMATE DIMENSIONS PER DWELLING

MAIN LIVING:	60.2m ²
UPPER LEVEL:	75.0m ²
GARAGE:	18.9m ²
PORCH:	1.9m ²
ALFRESCO:	17.0m ²
TOTAL:	173.0m ²