



13 Lindsay Street ELIZABETH DOWNS SA

3 1 3

For an in-depth look at this home, please click on the 3D tour for a virtual walk-through or copy and paste this link into your browser

Virtual <https://my.matterport.com/show/?m=ShPnckdfAc> Tour Link:

To submit an offer, please copy and paste this link into your browser:
<https://www.edgerealty.com.au/buying/make-an-offer/>

Tyson Bennett, Mike Lao and Edge Realty RLA256385 are proud to present to the market this delightful and light-filled family home on a generous 673sqm approx block, offering the perfect opportunity for young couples, first home buyers, or astute investors. This three bedroom home is

[For full version visit the website](https://www.edgerealty.com.au)

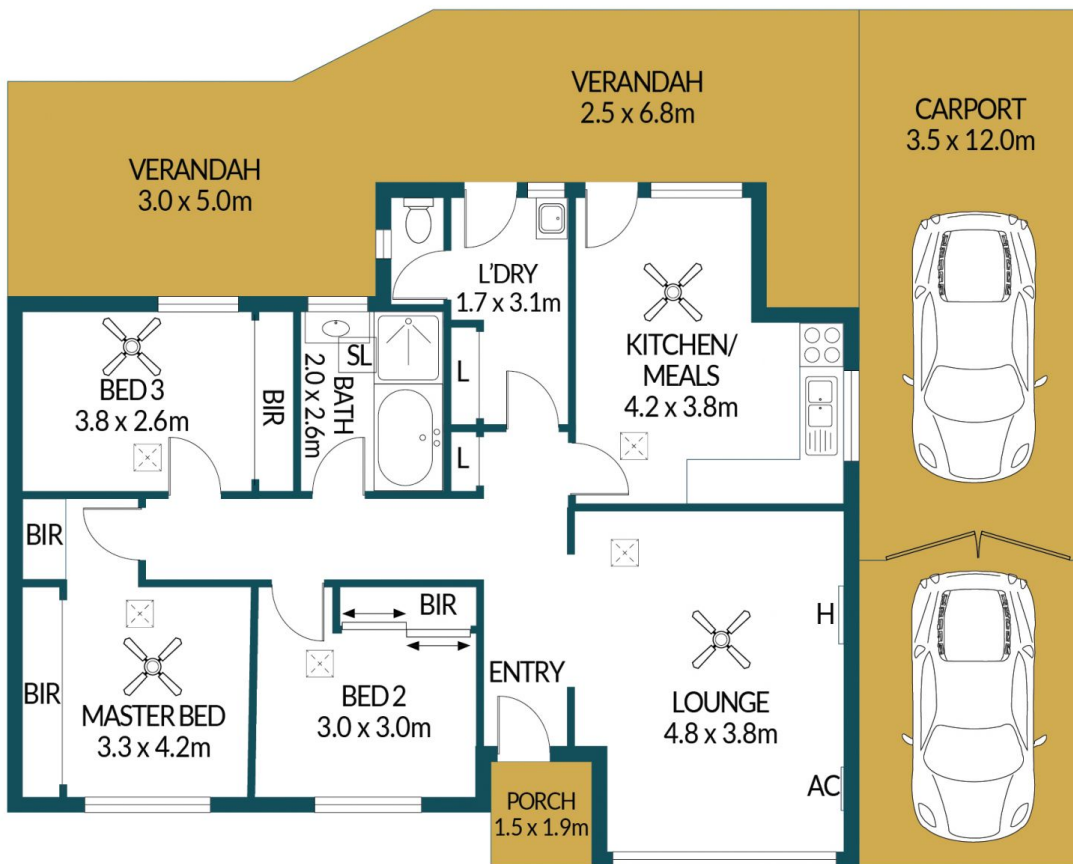
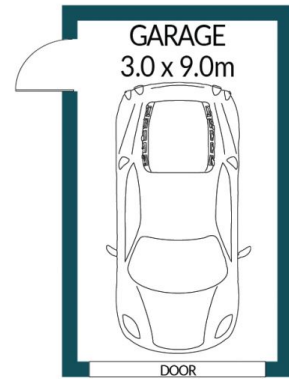
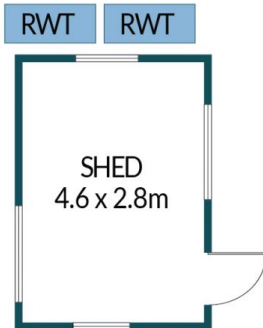
Type : House
Building Size : 87 sqm
Land Size : 673.22 sqm
View : <https://www.edgerealty.com.au/sale/sa/north-north-east-suburbs/elizabeth-downs/residential/house/8123995>



Tyson Bennett
0437161997



Mike Lao
0410390250



13 LINDSAY STREET, ELIZABETH DOWNS

Disclaimer

Plans shown are for marketing purposes only. All dimensions and placements are approximate and not to scale. They are subject to errors and inaccuracies and no liability will be accepted. Interested parties should make their own enquiries. Inclusions and exclusions must be confirmed in the Residential Contract.

APPROXIMATE DIMENSIONS

LIVING:	87.7m ²
GARAGE:	27.0m ²
CARPORT:	39.6m ²
PORCH:	2.9m ²
VERANDAH:	32.0m ²
SHED:	12.9m ²
TOTAL:	202.1m ²