



21b Saint Road SMITHFIELD PLAINS SA

4 🚗 2 🚗 3 🚗

For an in-depth look at the home, click on the 3D tour/video or paste these links into your browser

Virtual Tour: <https://tinyurl.com/bdc493>

Video: <https://tinyurl.com/5n8m9ukd>

To submit an offer, paste this link into your browser:
<https://www.edgerealty.com.au/buying/make-an-offer/>

Type : House
Building Size : 132 sqm
Land Size : 416 sqm
View : <https://www.edgerealty.com.au/sale/sa/north-north-east-suburbs/smithfield-plains/residential/house/8129949>

Mike Lao, Brendon Ly and Edge Realty RLA256385 are proud to present to the market a property that will truly tick your boxes for a contemporary, luxury and spacious residence in the heart of the booming Playford Alive development. Well-maintained and loved by its current owners, this corner-block home has been thoughtfully updated with high-quality finishes, making it a solid

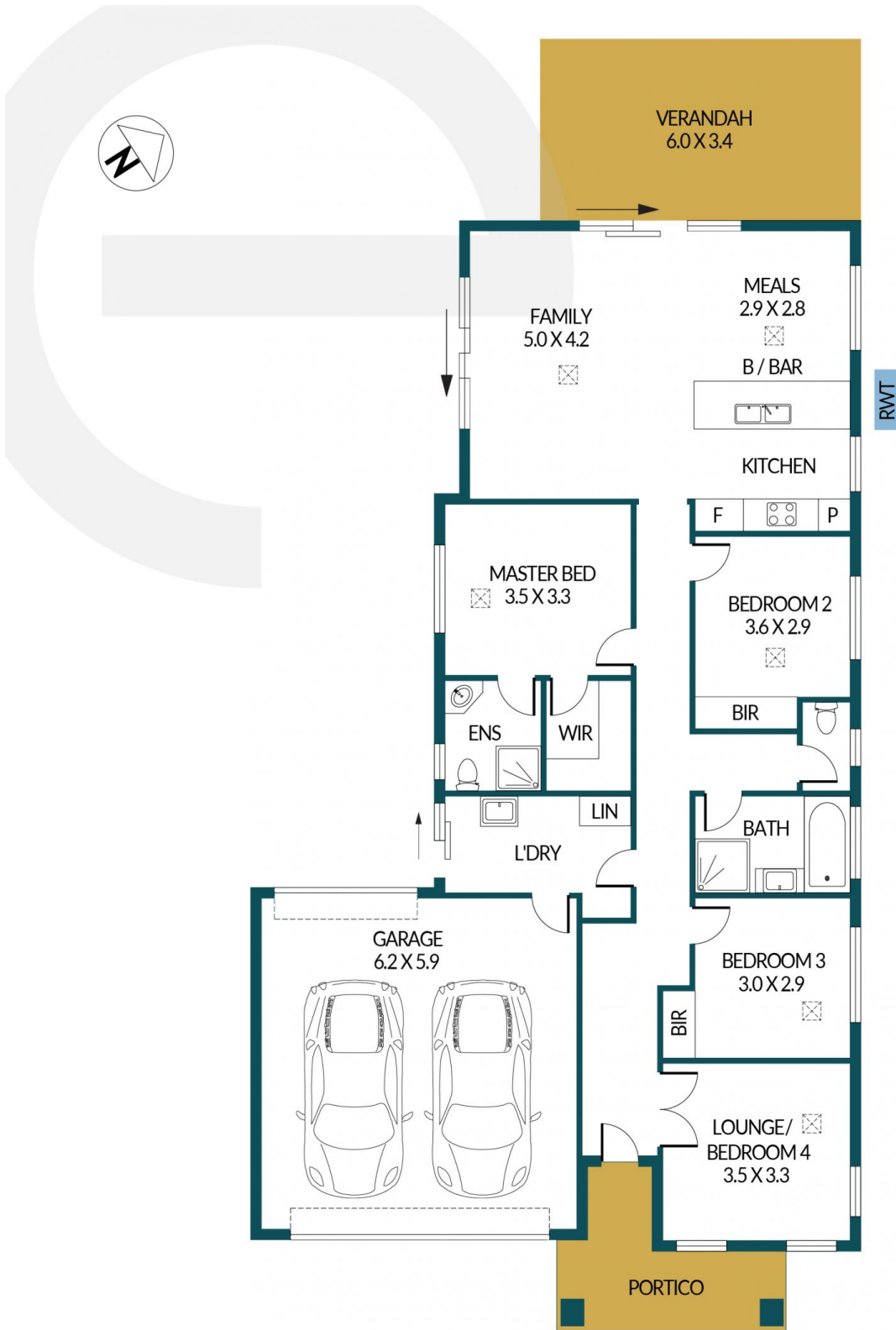
[For full version visit the website](https://www.edgerealty.com.au)



Mike Lao
0410390250



Brendon Ly
0447888444



21B SAINT ROAD, SMITHFIELD PLAINS



Disclaimer

Plans shown are for marketing purposes only. All dimensions and placements are approximate and not to scale. They are subject to errors and inaccuracies and Edge Realty will not accept any liability. Interested parties should make their own enquiries. Inclusions and exclusions must be confirmed in the Edge Realty Residential Contract.

APPROXIMATE DIMENSIONS

INTERNAL:	132.0m ²
EXTERNAL:	66.0m ²
TOTAL:	198.0m ²