



21 Berkeley Way HILLBANK SA

4 2 2

For an in-depth look at this home, please click on the 3D tour for a virtual walk-through or copy and paste this link into your browser

Virtual Tour Link:
<https://my.matterport.com/show/?m=UP6gfFBRTFq>

To submit an offer, please copy and paste this link into your browser:
<https://www.edgerealty.com.au/buying/make-an-offer/>

Mike Lao, Brendon Ly and Edge Realty RLA256385 are proud to present to the market an exceptional light-filled family home located in the heart of Hillbank. Sustainability and comfort meet at this property with ducted reverse cycle air-conditioning available throughout the home, while the

[For full version visit the website](https://www.edgerealty.com.au)

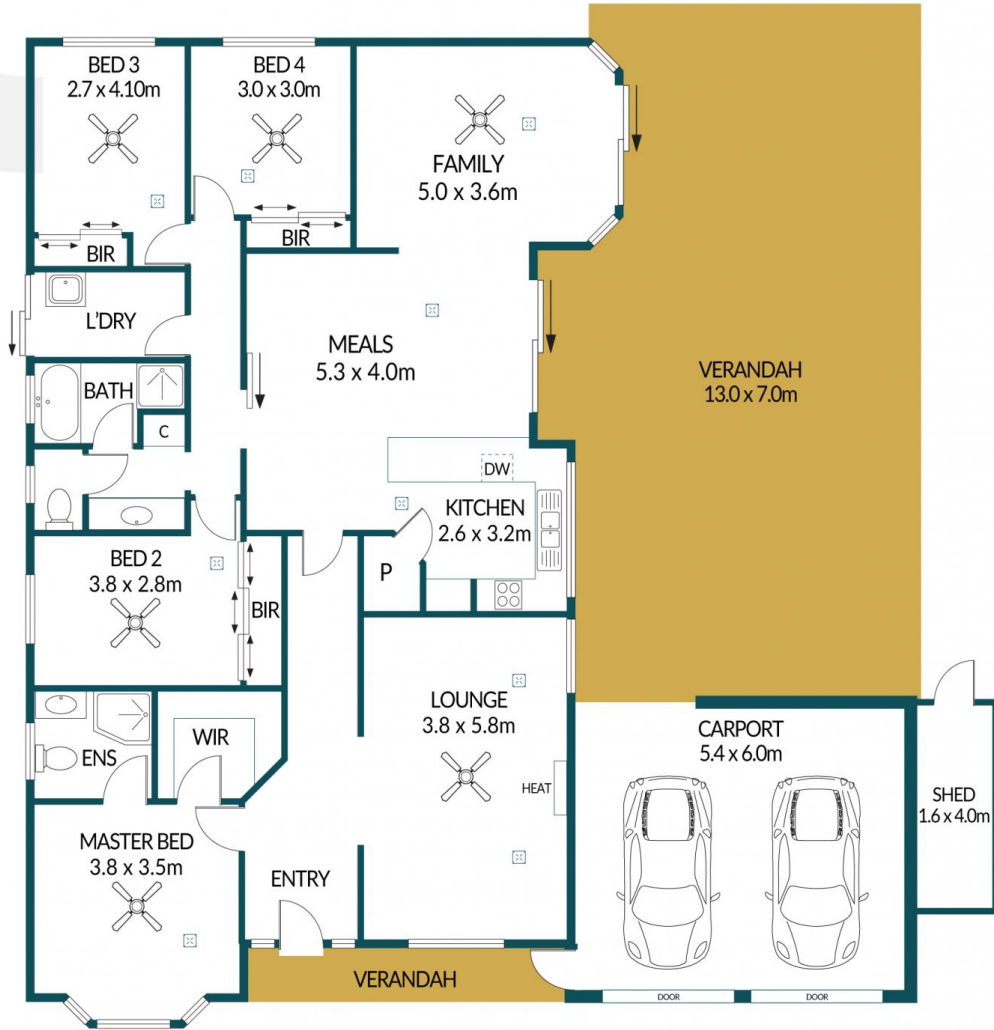
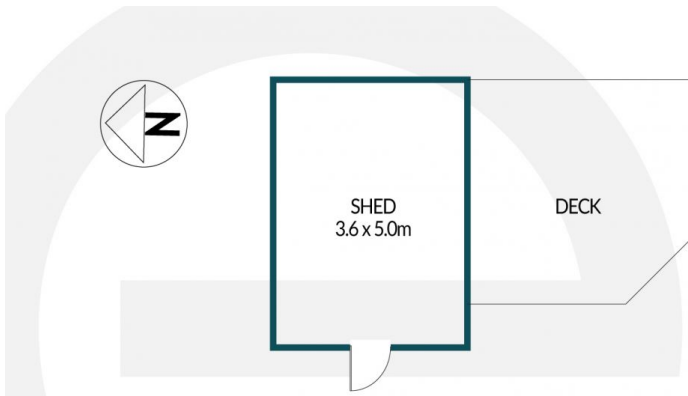
Type : House
Price : \$749,000 - \$819,000
Building Size : 154 sqm
Land Size : 683 sqm
View : <https://www.edgerealty.com.au/sale/sa/north-north-east-suburbs/hillbank/residential/house/8134147>



Mike Lao
 0410200250



Brendon Ly
 0417888444



21 BERKELEY WAY, HILLBANK



Disclaimer

Plans shown are for marketing purposes only. All dimensions and placements are approximate and not to scale. They are subject to errors and inaccuracies and Edge Realty will not accept any liability. Interested parties should make their own enquiries. Inclusions and exclusions must be confirmed in the Edge Realty Residential Contract.

EDGEREALTY.COM.AU

APPROXIMATE DIMENSIONS

LIVING:	154.0m ²
GARAGE:	32.4m ²
VERANDAH:	87.0m ²
SHED:	24.4m ²
TOTAL:	297.8m ²