



3 Berryman Road SMITHFIELD PLAINS SA

3 1 1

For an in-depth look at this home, please click on the 3D tour for a virtual walk-through or copy and paste this link into your browser

Virtual <https://my.matterport.com/show/?m=WZaboExoiZU> Tour Link:

To submit an offer, please copy and paste this link into your browser:
<https://www.edgerealty.com.au/buying/make-an-offer/>

Brendon Ly, Mike Lao and Edge Realty RLA256385 are proud to present to the market this wonderful abode set on a 610sqm approx block, perfect for families, first-time buyers and investors alike. Updated throughout and centrally located, you will want for nothing in this great

[For full version visit the website](https://www.edgerealty.com.au)

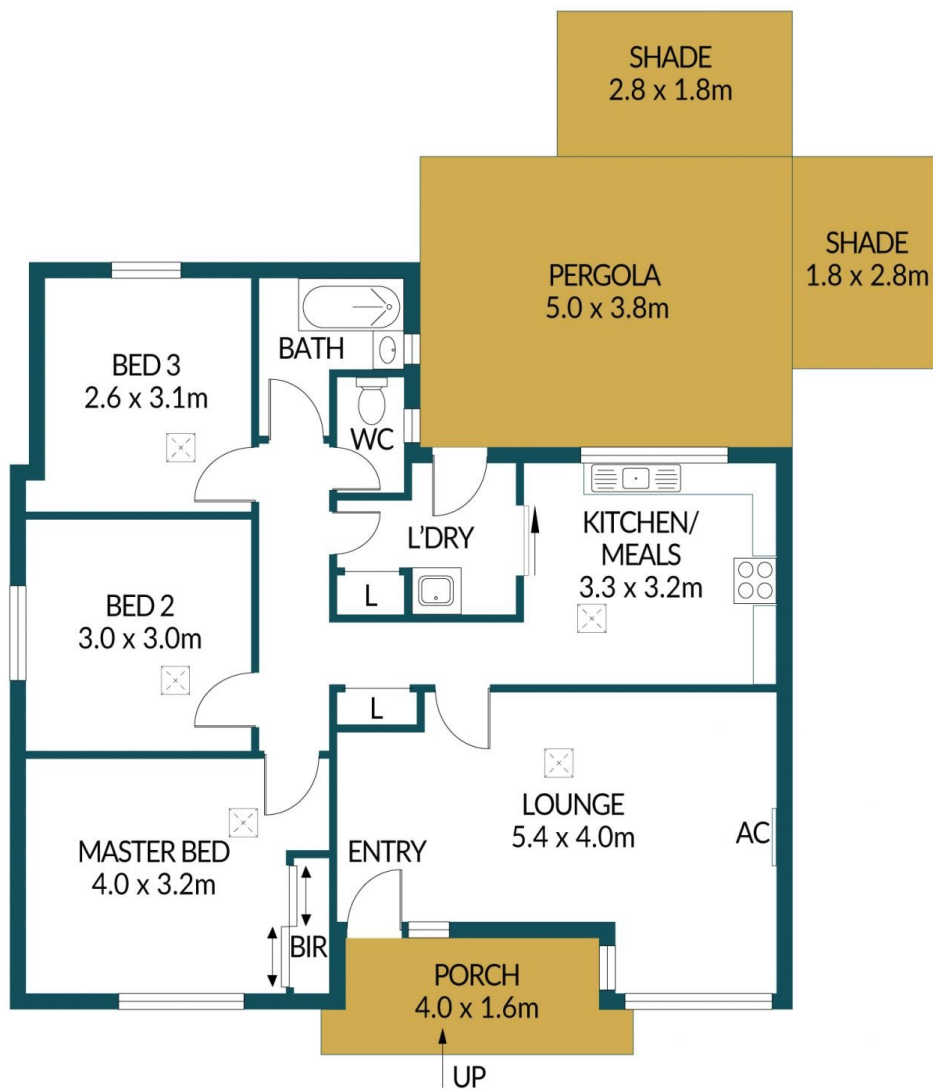
Type : House
Price : \$489,000 - \$537,000
Building Size : 80 sqm
Land Size : 610 sqm
View : <https://www.edgerealty.com.au/sale/sa/north-north-east-suburbs/smithfield-plains/residential/house/8136716>



Brendon Ly
 0417888111



Mike Lao
 0419299259



3 BERRYMAN ROAD, SMITHFIELD PLAINS

Disclaimer

Plans shown are for marketing purposes only. All dimensions and placements are approximate and not to scale. They are subject to errors and inaccuracies and no liability will be accepted. Interested parties should make their own enquiries. Inclusions and exclusions must be confirmed in the Residential Contract.

APPROXIMATE DIMENSIONS

LIVING:	80.3m ²
PORCH:	6.4m ²
PERGOLA:	19.0m ²
SHADE/SHED:	24.6m ²
TOTAL:	130.3m ²