



17 Bronwyn Crescent SALISBURY NORTH SA

4 🛏 1 🚿 2 🚗

For an in-depth look at this home, please click on the 3D tour for a virtual walk-through or copy and paste this link into your browser

Virtual Tour Link:
<https://my.matterport.com/show/?m=iySkZbtwb7a>

To submit an offer, please copy and paste this link into your browser:
<https://www.edgerealty.com.au/buying/make-an-offer/>

Mike Lao, Brendon Ly and Edge Realty RLA256385 are proud to present to the market this spacious family home with character throughout that is ready to be customised to create your ideal living space. Situated in the serene suburb of Salisbury North, 17 Bronwyn Street beckons first

[For full version visit the website](https://www.edgerealty.com.au)

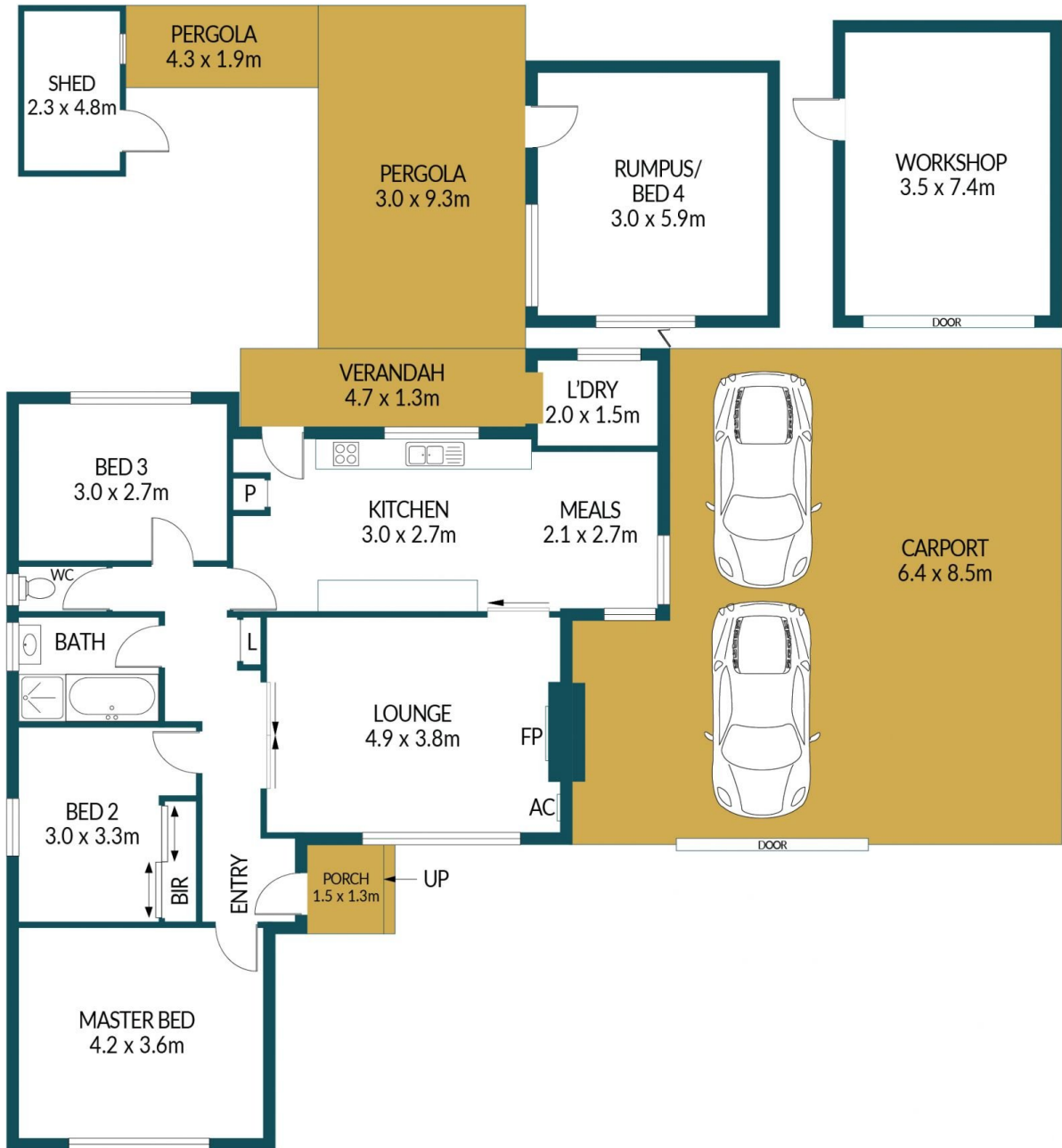
Type : House
Price : Under Contract!
Building Size : 100 sqm
Land Size : 596.7 sqm
View : <https://www.edgerealty.com.au/sale/sa/north-north-east-suburbs/salisbury-north/residential/house/8140072>



Mike Lao
 0410200250



Brendon Ly
 0417888444



17 BRONWYN CRESCENT, SALISBURY NORTH

Disclaimer

Plans shown are for marketing purposes only. All dimensions and placements are approximate and not to scale. They are subject to errors and inaccuracies and no liability will be accepted. Interested parties should make their own enquiries. Inclusions and exclusions must be confirmed in the Residential Contract.

APPROXIMATE DIMENSIONS

LIVING:	100.0m ²
CARPORT:	54.4m ²
WORKSHOP/SHED:	36.9m ²
VERANDAH/PORCH:	8.06m ²
PERGOLA:	36.1m ²
TOTAL:	235.5m ²