



42 Amanda Street SALISBURY SA

3 1 3

For an in-depth look at this home, please click on the 3D tour for a virtual walk-through or copy and paste this link into your browser

Virtual <https://my.matterport.com/show/?m=23GnNvgV86x> Tour Link:

Auction Sunday the 20th of October 2024 onsite at 12:30pm (Unless Sold Prior)

*Property must be Sold, Under Vendor instructions the property is being offered with no Price Guide. A list of relevant Sales is accessible in the following link <https://vltre.co/H3qUZS>

To submit an offer, please copy and paste this link into your browser:

[For full version visit the website](https://www.edgerealty.com.au)

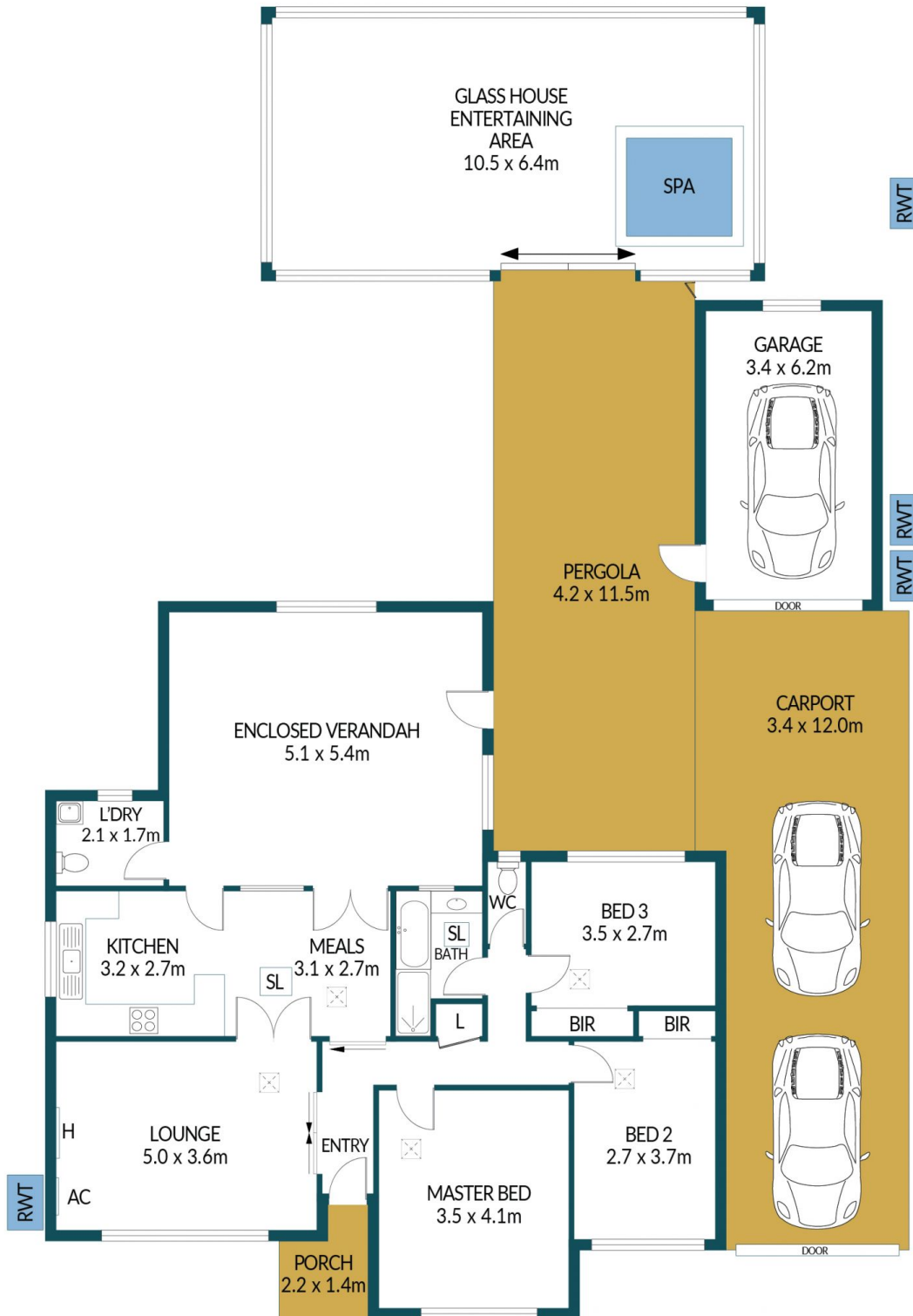
Type : House
Price : \$ 725,000
Building Size : 129 sqm
Land Size : 724.25 sqm
View : <https://www.edgerealty.com.au/sale/sa/north-north-east-suburbs/salisbury/residential/house/8141444>



Mike Lao
0419299259



Brendon Ly
0417888444



42 AMANDA STREET, SALISBURY

Disclaimer

Plans shown are for marketing purposes only. All dimensions and placements are approximate and not to scale. They are subject to errors and inaccuracies and no liability will be accepted. Interested parties should make their own enquiries. Inclusions and exclusions must be confirmed in the Residential Contract.

APPROXIMATE DIMENSIONS

LIVING:	129.1m ²
GARAGE/PERGOLA:	69.4m ²
CARPORT/PORCH:	43.9m ²
ENTERTAINING:	67.2m ²
TOTAL:	309.6m ²