



49 Coach Street SALISBURY EAST SA

4 🛏 2 🚿 2 🚗

For an in-depth look at this home, please click on the 3D tour for a virtual walk-through or copy and paste this link into your browser

Virtual Tour Link:
<https://my.matterport.com/show/?m=pvhJzP2di1k>

To submit an offer, please copy and paste this link into your browser:
<https://www.edgerealty.com.au/buying/make-an-offer/>

Mike Lao, Tyson Bennett and Edge Realty RLA256385 are proud to present to market your very own slice of paradise set on a generous 650sqm approx. easement-free block in the sought after suburb of Salisbury East. Whether you're an avid entertainer or simply enjoy spending quality time

[For full version visit the website](https://www.edgerealty.com.au)

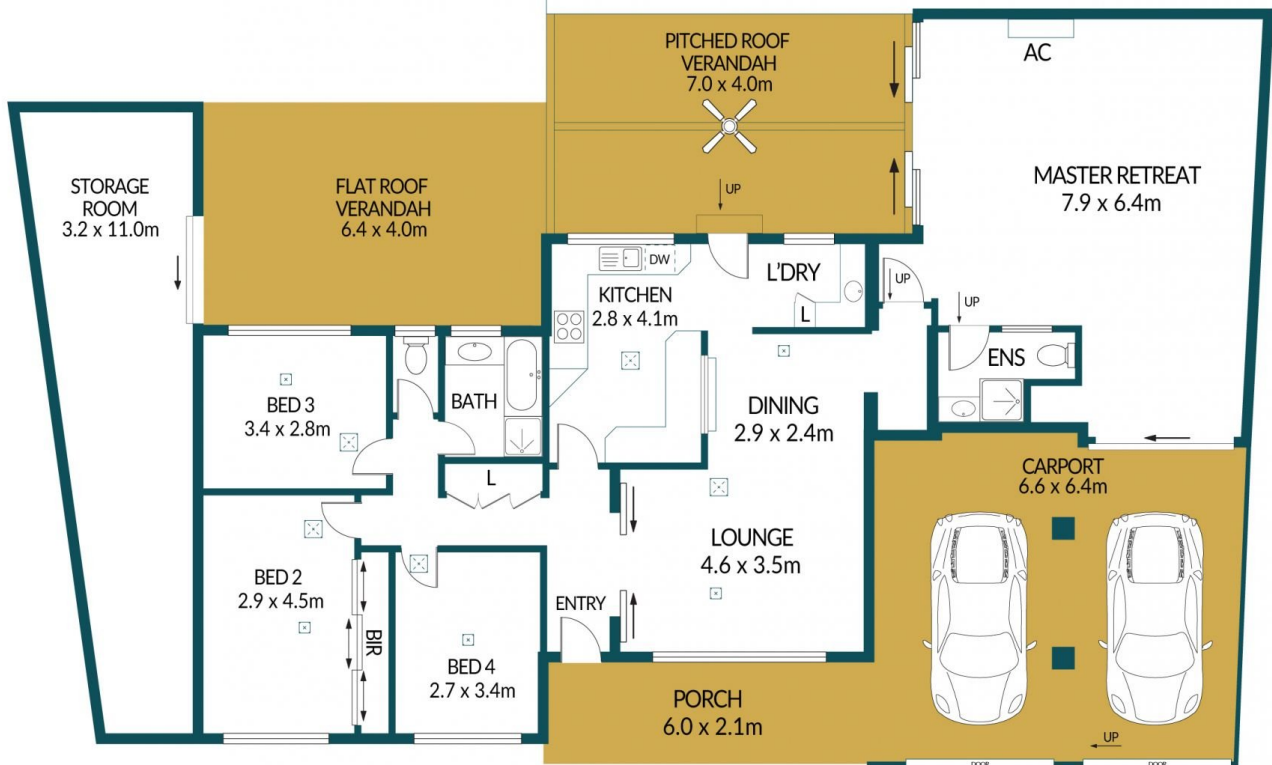
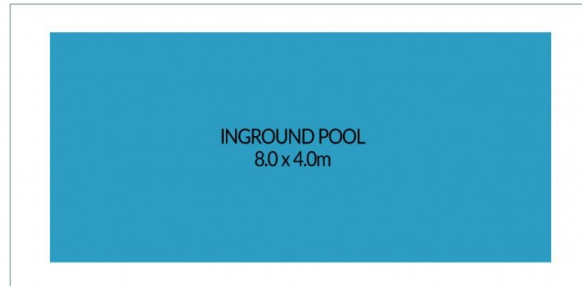
Type : House
Price : \$699,000 - \$759,000
Building Size : 160 sqm
Land Size : 650 sqm
View : <https://www.edgerealty.com.au/sale/sa/north-north-east-suburbs/salisbury-east/residential/house/8147402>



Mike Lao
 0419300350



Tyson Bennett
 0427461007



49 COACH STREET, SALISBURY EAST



Disclaimer

Plans shown are for marketing purposes only. All dimensions and placements are approximate and not to scale. They are subject to errors and inaccuracies and Edge Realty will not accept any liability. Interested parties should make their own enquiries. Inclusions and exclusions must be confirmed in the Edge Realty Residential Contract.

EDGEREALTY.COM.AU

APPROXIMATE DIMENSIONS

LIVING:	160 m ²
CARPORTS:	42.2 m ²
VERANDAHS:	53.6 m ²
PORCH:	12.6 m ²
STORAGE:	25.7 m ²
TOTAL:	294.1 m ²