



## 513 Stebonheath Road ANDREWS FARM SA

3 2 2

\*For an in-depth look at this home, please click on the 3D tour for a virtual walk-through or copy and paste this link into your browser\*

Virtual Tour Link:  
<https://my.matterport.com/show/?m=UyabkmT1x3Z>

To submit an offer, please copy and paste this link into your browser:  
<https://www.edgerealty.com.au/buying/make-an-offer/>

Mike Lao, Brendon Ly and Edge Realty RLA256385 are proud to present to the market this beautiful 3 bedroom family home ready for you to simply move in and start making memories. This low-maintenance home stands out with its striking facade, featuring a blend of brick and

[For full version visit the website](https://www.edgerealty.com.au)

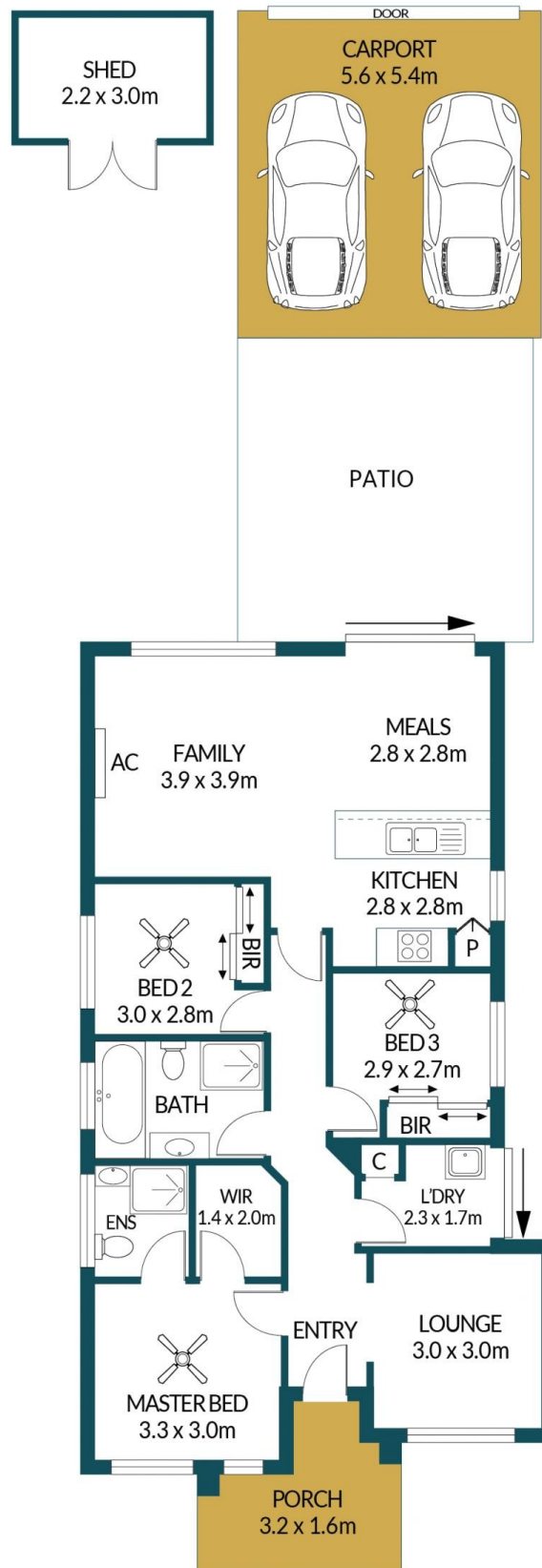
**Type** : House  
**Price** : \$499,000 - \$548,000  
**Building Size** : 156 sqm  
**Land Size** : 300 sqm  
**View** : <https://www.edgerealty.com.au/sale/sa/north-north-east-suburbs/andrews-farm/residential/house/8147687>



**Mike Lao**  
 0410200250



**Brendon Ly**  
 0417888444



## 513 STEBONHEATH ROAD, ANDREWS FARM

### Disclaimer

Plans shown are for marketing purposes only. All dimensions and placements are approximate and not to scale. They are subject to errors and inaccuracies and no liability will be accepted. Interested parties should make their own enquiries. Inclusions and exclusions must be confirmed in the Residential Contract.

### APPROXIMATE DIMENSIONS

LIVING:	95.8m <sup>2</sup>
CARPORT:	30.2m <sup>2</sup>
PORCH:	5.1m <sup>2</sup>
SHED:	6.6m <sup>2</sup>
TOTAL:	137.7m <sup>2</sup>