

## 2A Gladys Crescent ATHELSTONE SA

3 2 1

\*For an in-depth look at this home, please click on the 3D tour for a virtual walk-through or copy and paste this link into your browser\*

Virtual [Tour](https://my.matterport.com/show/?m=tnFcxJ1iys7) Link:

To submit an offer, please copy and paste this link into your browser:  
<https://www.edgerealty.com.au/buying/make-an-offer/>

Mike Lao, Tyson Bennett and Edge Realty RLA256385 are proud to present to the market this charming family home nestled in the popular suburb of Athelstone. This property comes with quality finishes including ducted reverse cycle air-conditioning throughout, pop up sprinklers with timers

[For full version visit the website](https://www.edgerealty.com.au)

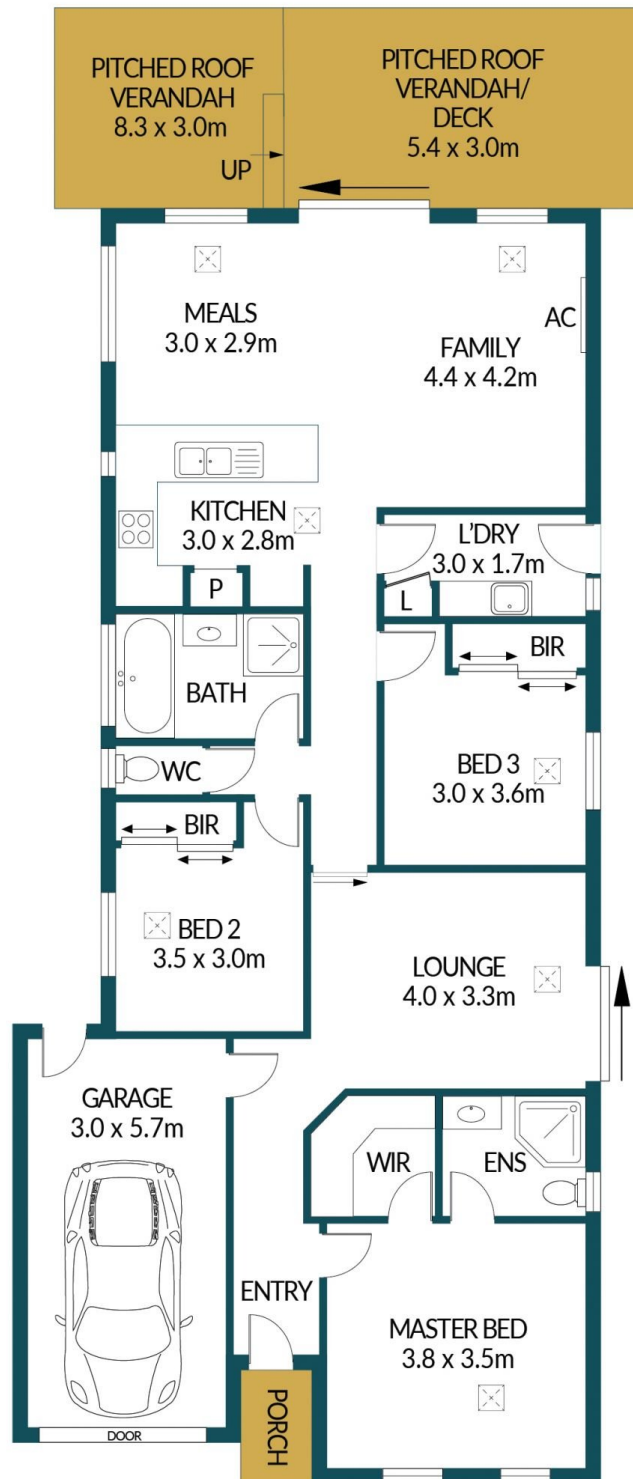
**Type** : House  
**Price** : \$799,000 - \$849,000  
**Building Size** : 113 sqm  
**Land Size** : 352 sqm  
**View** : <https://www.edgerealty.com.au/sale/sa/north-north-east-suburbs/athelstone/residential/house/8148092>



**Mike Lao**  
 0410200250



**Tyson Bennett**  
 0427461007



## 2A GLADYS CRESCENT, ATHELSTONE

### Disclaimer

Plans shown are for marketing purposes only. All dimensions and placements are approximate and not to scale. They are subject to errors and inaccuracies and no liability will be accepted. Interested parties should make their own enquiries. Inclusions and exclusions must be confirmed in the Residential Contract.

### APPROXIMATE DIMENSIONS

LIVING:	113.2m <sup>2</sup>
GARAGE:	17.1m <sup>2</sup>
PORCH:	2.0m <sup>2</sup>
VERANDAH/DECK:	24.9m <sup>2</sup>
TOTAL:	157.8m <sup>2</sup>