

4 Rosella Drive EYRE SA

4 🏠 2 🚗 2 🚗

For an in-depth look at this home, please click on the 3D tour for a virtual walk-through or copy and paste this link into your browser

Virtual Tour Link:
<https://my.matterport.com/show/?m=tRrjUVCL4F>

To submit an offer, please copy and paste this link into your browser:
<https://www.edgerealty.com.au/buying/make-an-offer/>

Mike Lao, Brendon Ly and Edge Realty RLA256385 are proud to present to the market this contemporary Eyre home with a flexible floorplan and striking monochrome colour scheme. This spacious and utterly stylish residence where no detail has been overlooked is sure to impress,

[For full version visit the website](https://www.edgerealty.com.au)

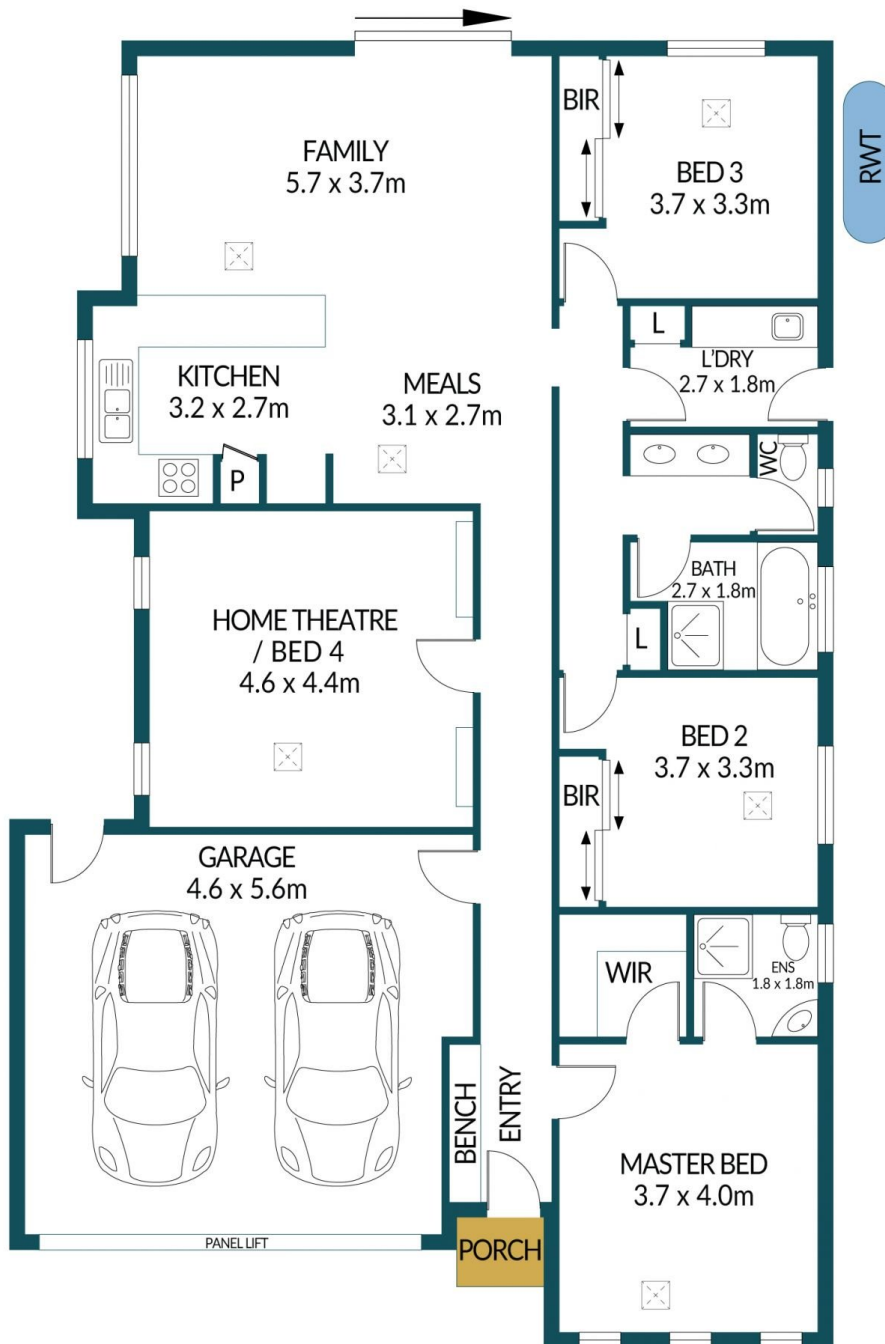
Type : House
Price : \$659,000 - \$719,000
Building Size : 131 sqm
Land Size : 422 sqm
View : <https://www.edgerealty.com.au/sale/sa/north-north-east-suburbs/eyre/residential/house/8163052>



Mike Lao
 0410200250



Brendon Ly
 0417888444



4 ROSELLA DRIVE, EYRE

Disclaimer

Plans shown are for marketing purposes only. All dimensions and placements are approximate and not to scale. They are subject to errors and inaccuracies and no liability will be accepted. Interested parties should make their own enquiries. Inclusions and exclusions must be confirmed in the Residential Contract.

APPROXIMATE DIMENSIONS

LIVING:	131.3m ²
PORCH:	1.2m ²
GARAGE:	25.7m ²
TOTAL:	158.2m ²