



15 Primrose Court DAVOREN PARK SA

4 2 2

For an in-depth look at this home, please click on the 3D tour for a virtual walk-through or copy and paste this link into your browser

Virtual Tour Link: <https://shorturl.at/C4gqU>

To submit an offer, please copy and paste this link into your browser:

<https://www.edgerealty.com.au/buying/make-an-offer/>

Mike Lao, Tyson Bennett and Edge Realty RLA256385 are proud to present to the market this beautifully presented family home built by Astel Homes and located close to everything you could ever need. Nestled along a quiet street in Davoren Park surrounded by other quality new homes, you'll have shops, schools, parks and public

[For full version visit the website](#)

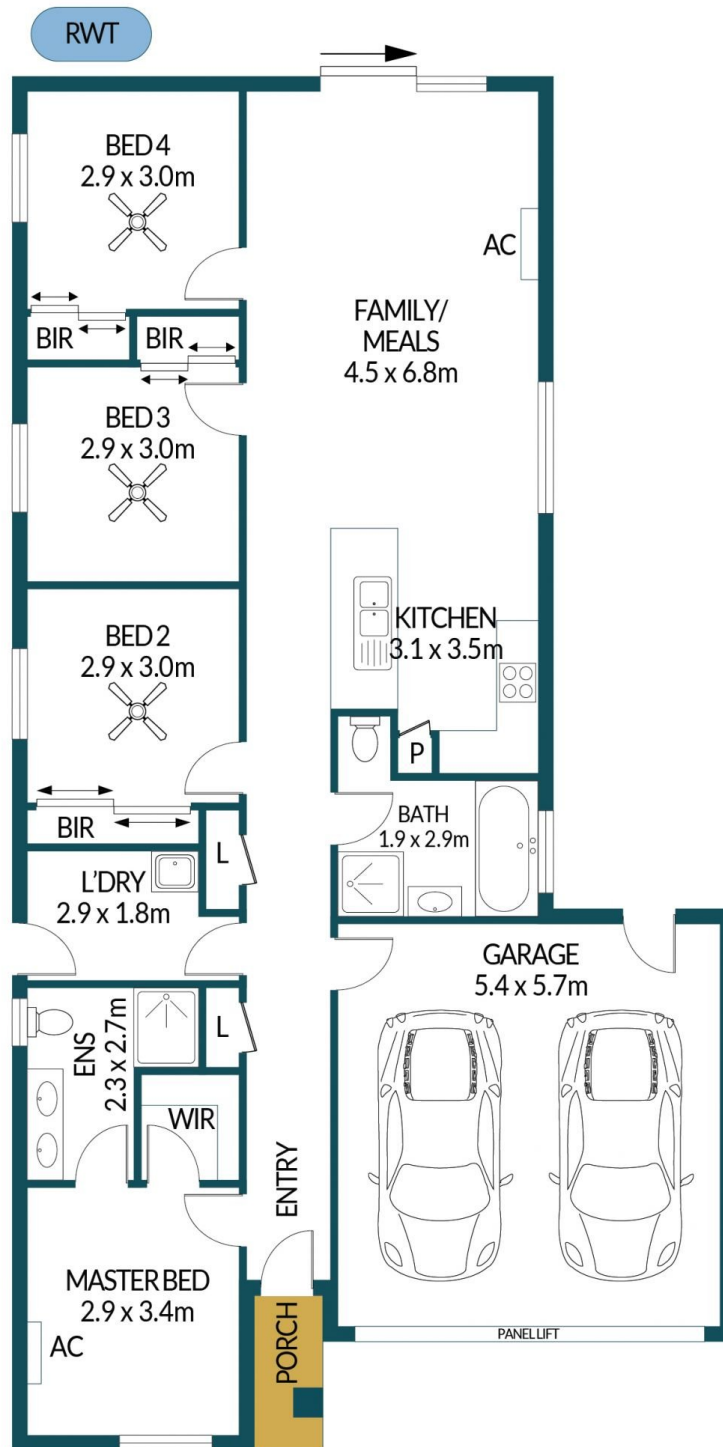
Type : House
Price : \$599,000 - \$658,000
Building Size : 110 sqm
Land Size : 375 sqm
View : <https://www.edgerealty.com.au/sale/sa/north-north-east-suburbs/davoren-park/residential/house/8163353>



Mike Lao
0410200250



Tyson Bennett
0427461007



15 PRIMROSE COURT, DAVOREN PARK

Disclaimer

Plans shown are for marketing purposes only. All dimensions and placements are approximate and not to scale. They are subject to errors and inaccuracies and no liability will be accepted. Interested parties should make their own enquiries. Inclusions and exclusions must be confirmed in the Residential Contract.

APPROXIMATE DIMENSIONS

LIVING:	110.5m ²
PORCH:	1.9m ²
GARAGE:	30.7m ²
TOTAL:	143.1m ²