



50 Cambridge Terrace HILLBANK SA

5 🛏 2 🚿 2 🚗

For an in-depth look at this home, please click on the 3D tour for a virtual walk-through or copy and paste this link into your browser

Virtual Tour Link:
<https://my.matterport.com/show/?m=CsHCaR8pePP>

To submit an offer, please copy and paste this link into your browser:
<https://www.edgerealty.com.au/buying/make-an-offer/>

Mike Lao, Tyson Bennett and Edge Realty RLA256385 are proud to present to the market this breathtaking blue-stone bay window home, where the beauty of nature meets luxurious comfort. Nestled against a lush reserve that attracts koalas, kangaroos, and native birds, this residence

[For full version visit the website](https://www.edgerealty.com.au)

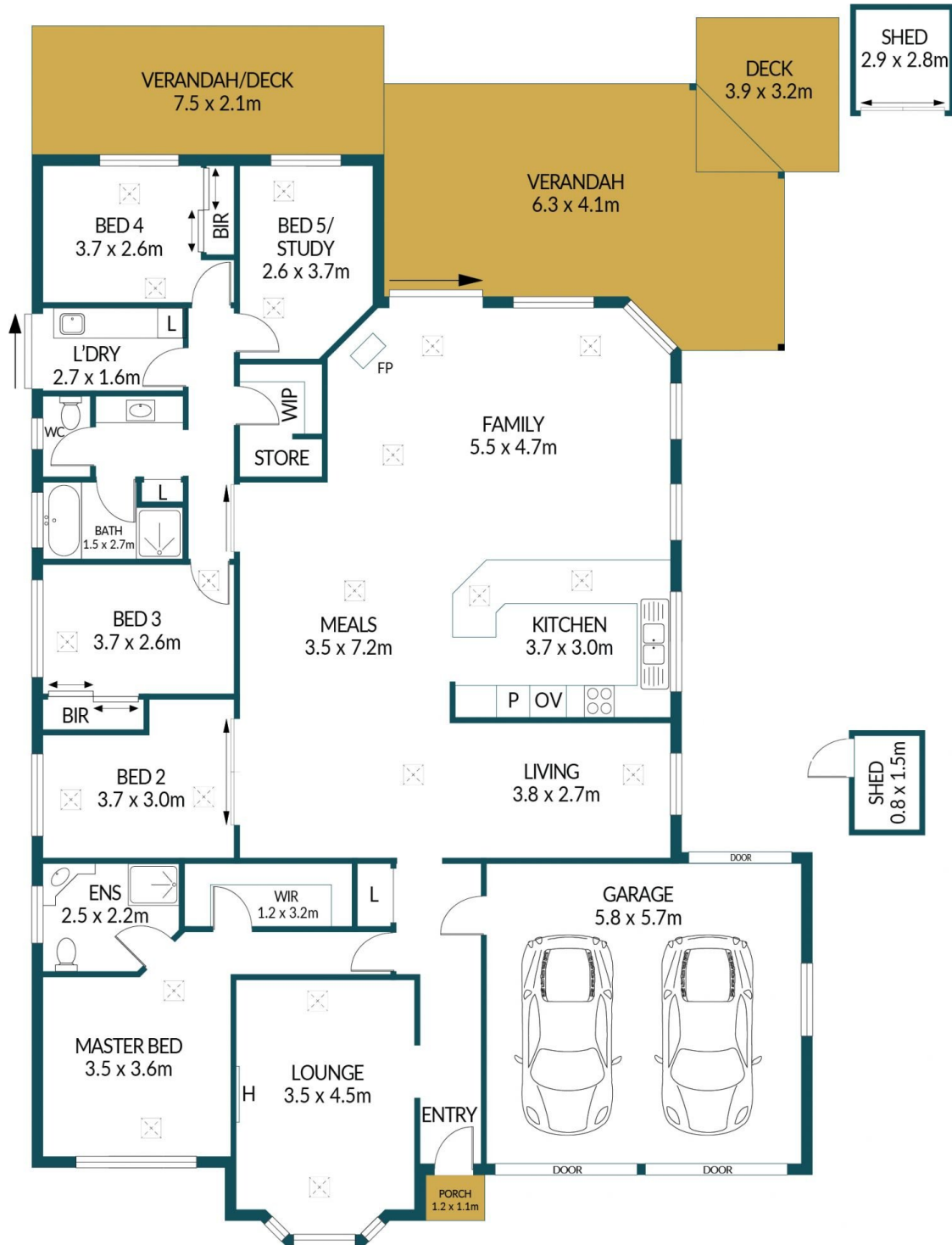
Type : House
Price : \$779,000 - \$829,000
Building Size : 190 sqm
Land Size : 600 sqm
View : <https://www.edgerealty.com.au/sale/sa/north-north-east-suburbs/hillbank/residential/house/8177782>



Mike Lao
 0410200250



Tyson Bennett
 0427461007



50 CAMBRIDGE TERRACE, HILLBANK

Disclaimer

Plans shown are for marketing purposes only. All dimensions and placements are approximate and not to scale. They are subject to errors and inaccuracies and no liability will be accepted. Interested parties should make their own enquiries. Inclusions and exclusions must be confirmed in the Residential Contract.

APPROXIMATE DIMENSIONS

LIVING:	190.0m ²
GARAGE:	33.0m ²
PORCH:	1.3m ²
VERANDAH/DECK:	54.0m ²
SHED:	9.3m ²
TOTAL:	287.6m ²