

## 54 Bristol Crescent DAVOREN PARK SA

4 2 2

\*For an in-depth look at this home, please click on the 3D tour for a virtual walk-through or copy and paste this link into your browser\*

Virtual Tour Link:  
<https://my.matterport.com/show/?m=o4U136oEBvm>

To submit an offer, please copy and paste this link into your browser:  
<https://www.edgerealty.com.au/buying/make-an-offer/>

Mike Lao, Brendon Ly and Edge Realty RLA256385 are proud to present to the market a wonderful family home set on a 702sqm block with a contemporary design and neutral colour scheme, creating a blank canvas for you to personalise your dream abode. Peace of mind is assured

[For full version visit the website](https://www.edgerealty.com.au)

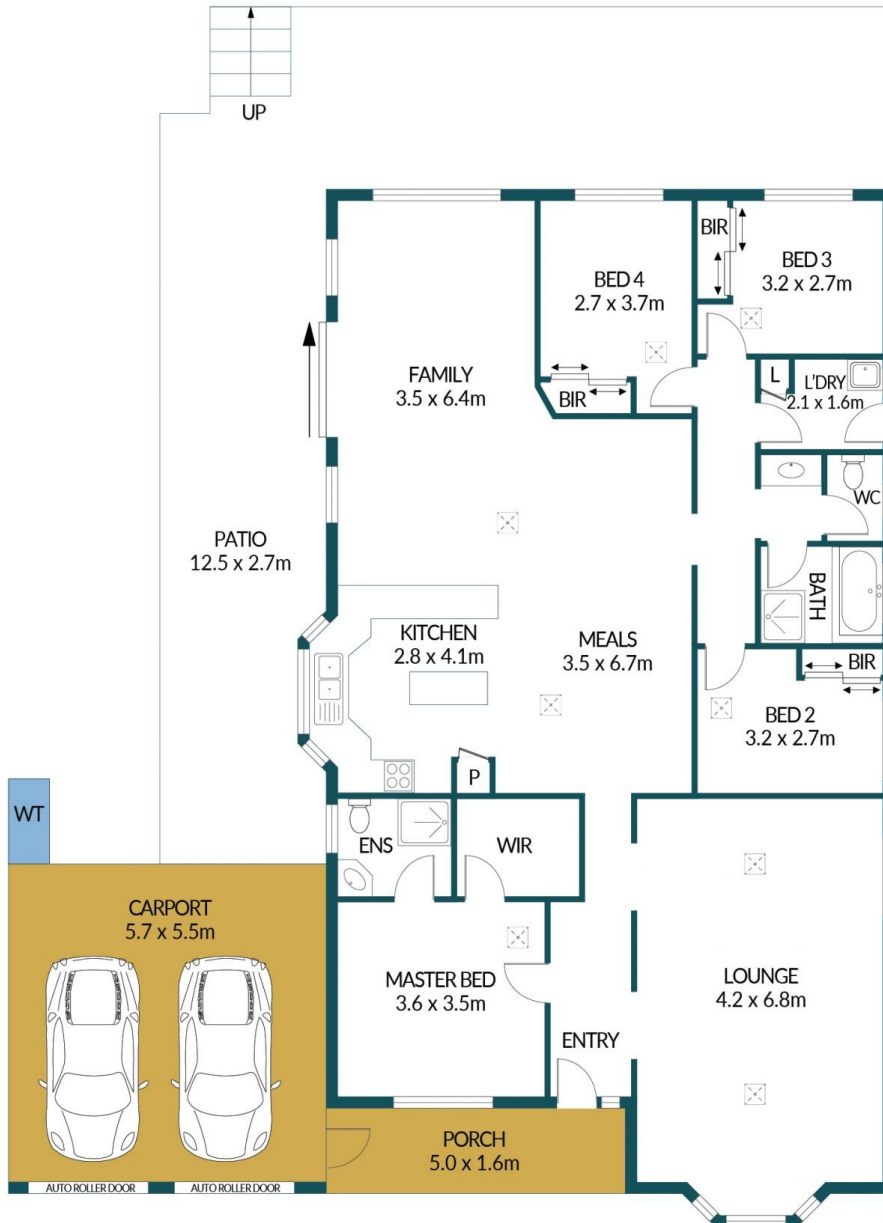
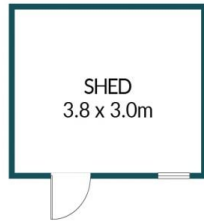
**Type** : House  
**Price** : \$669,000 - \$729,000  
**Building Size** : 174 sqm  
**Land Size** : 702 sqm  
**View** : <https://www.edgerealty.com.au/sale/sa/north-north-east-suburbs/davoren-park/residential/house/8177980>



**Mike Lao**  
 0410200250



**Brendon Ly**  
 0417888444



## 54 BRISTOL CRESCENT, DAVOREN PARK

### Disclaimer

Plans shown are for marketing purposes only. All dimensions and placements are approximate and not to scale. They are subject to errors and inaccuracies and no liability will be accepted. Interested parties should make their own enquiries. Inclusions and exclusions must be confirmed in the Residential Contract.

### APPROXIMATE DIMENSIONS

LIVING:	174.3m <sup>2</sup>
CARPORT:	31.4m <sup>2</sup>
PORCH:	3.9m <sup>2</sup>
PATIO:	33.7m <sup>2</sup>
SHED:	11.4m <sup>2</sup>
TOTAL:	254.7m <sup>2</sup>