



9 Small Crescent SMITHFIELD PLAINS SA

4 🛏 2 🚿 2 🚗

For an in-depth look at this home, please click on the 3D tour for a virtual walk-through or copy and paste this link into your browser

Virtual Tour Link: <https://shorturl.at/FaFMI>

To submit an offer, please copy and paste this link into your browser:

<https://www.edgerealty.com.au/buying/make-an-offer/>

Mike Lao, Brendon Ly and Edge Realty RLA256385 are proud to present to the market this beautifully presented family home located close to everything you could ever need. Perfect for families, first home buyers, and astute investors alike, this property offers the ultimate in modern convenience and contemporary style. For investors, there

[For full version visit the website](https://www.edgerealty.com.au)

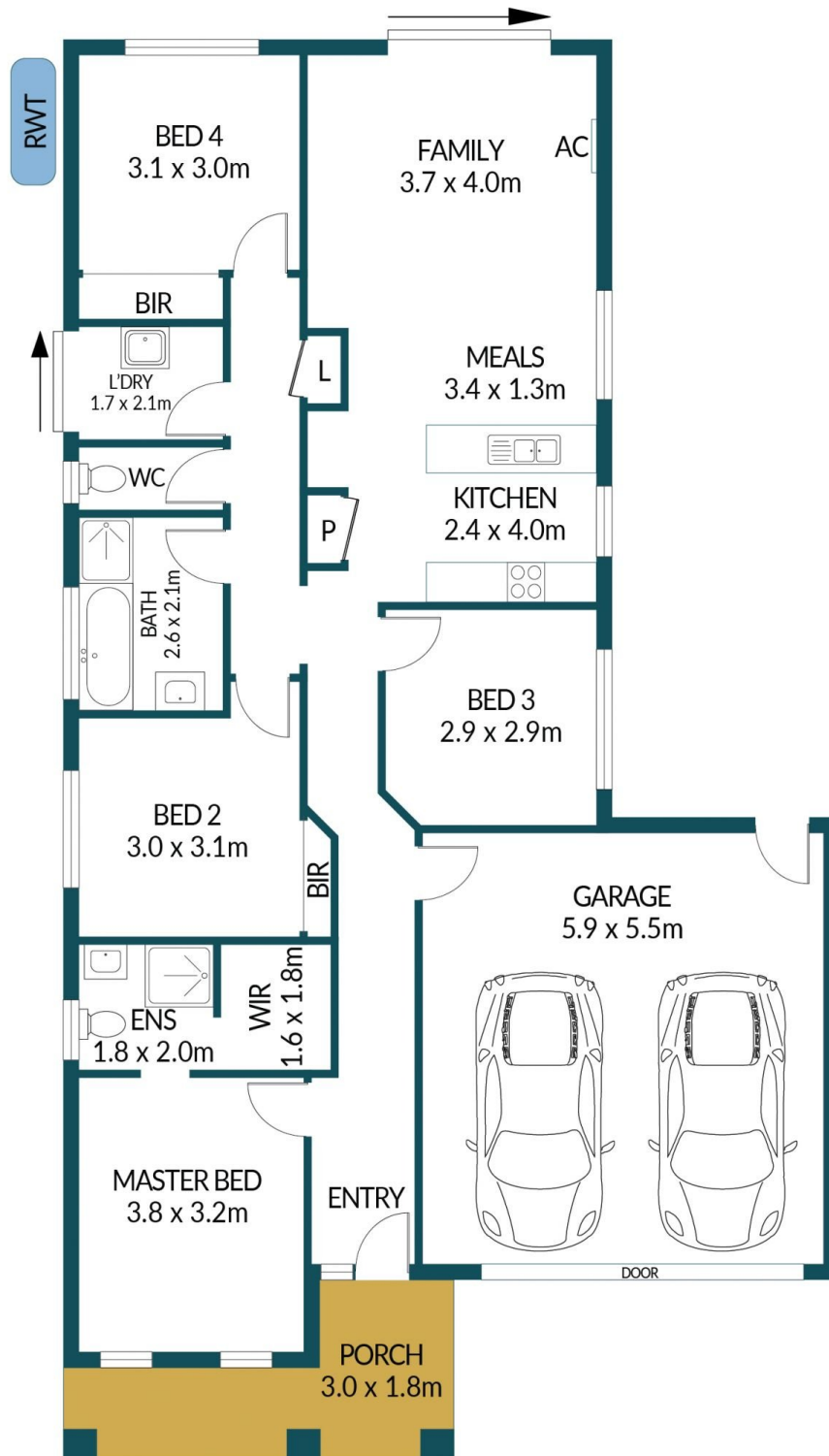
Type : House
Price : \$619,000 - \$669,000
Building Size : 105 sqm
Land Size : 419 sqm
View : <https://www.edgerealty.com.au/sale/sa/north-north-east-suburbs/smithfield-plains/residential/house/8177998>



Mike Lao
0419399359



Brendon Ly
0417888444



9 SMALL CRESCENT, SMITHFIELD PLAINS

Disclaimer

Plans shown are for marketing purposes only. All dimensions and placements are approximate and not to scale. They are subject to errors and inaccuracies and no liability will be accepted. Interested parties should make their own enquiries. Inclusions and exclusions must be confirmed in the Residential Contract.

APPROXIMATE DIMENSIONS

LIVING:	105.3m ²
GARAGE:	32.5m ²
PORCH:	8.5m ²
TOTAL:	146.3m ²