



22 Hooper Road SMITHFIELD PLAINS SA

3 1 1

For an in-depth look at this home, please click on the 3D tour for a virtual walk-through or copy and paste this link into your browser

Virtual <https://my.matterport.com/show/?m=Rd3RaBvfQvu> Tour Link:

To submit an offer, please copy and paste this link into your browser:
<https://www.edgerealty.com.au/buying/make-an-offer/>

Mike Lao, Brendon Ly and Edge Realty RLA256385 are proud to present to the market this fantastic home, situated on a generous 645sqm approx. block in the heart of Smithfield Plains, offering endless possibilities for families and savvy investors. With 3 bedrooms, 1 bathroom, a living

[For full version visit the website](https://www.edgerealty.com.au)

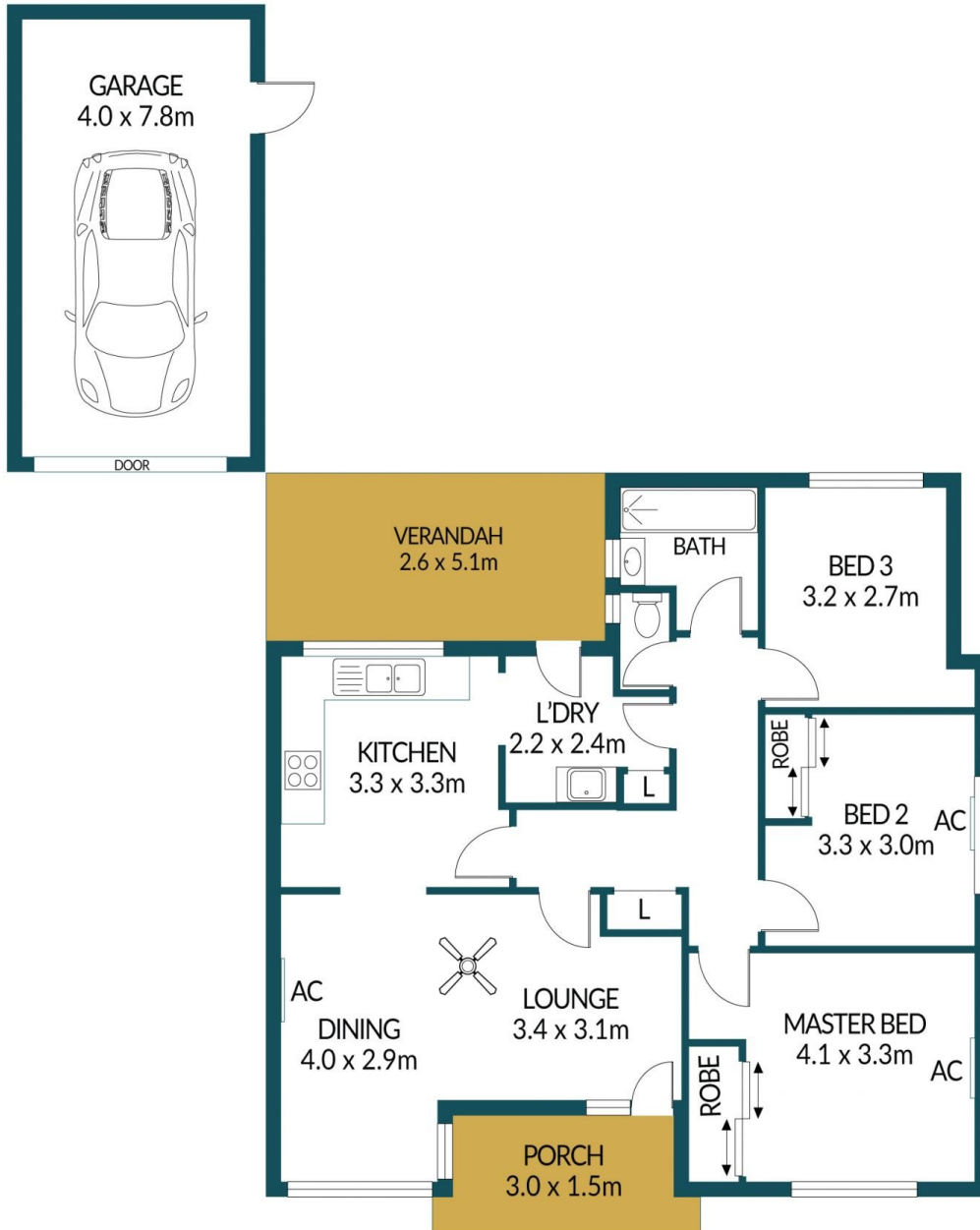
Type : House
Price : \$549,000 - \$599,000
Building Size : 81 sqm
Land Size : 645.59 sqm
View : <https://www.edgerealty.com.au/sale/sa/north-north-east-suburbs/smithfield-plains/residential/house/8178014>



Mike Lao
0419309359



Brendon Ly
0417888444



22 HOOPER ROAD, SMITHFIELD PLAINS

Disclaimer

Plans shown are for marketing purposes only. All dimensions and placements are approximate and not to scale. They are subject to errors and inaccuracies and no liability will be accepted. Interested parties should make their own enquiries. Inclusions and exclusions must be confirmed in the Residential Contract.

APPROXIMATE DIMENSIONS

LIVING:	81.5m ²
GARAGE:	31.2m ²
VERANDAH:	13.3m ²
PORCH:	4.5m ²
TOTAL:	130.5m ²